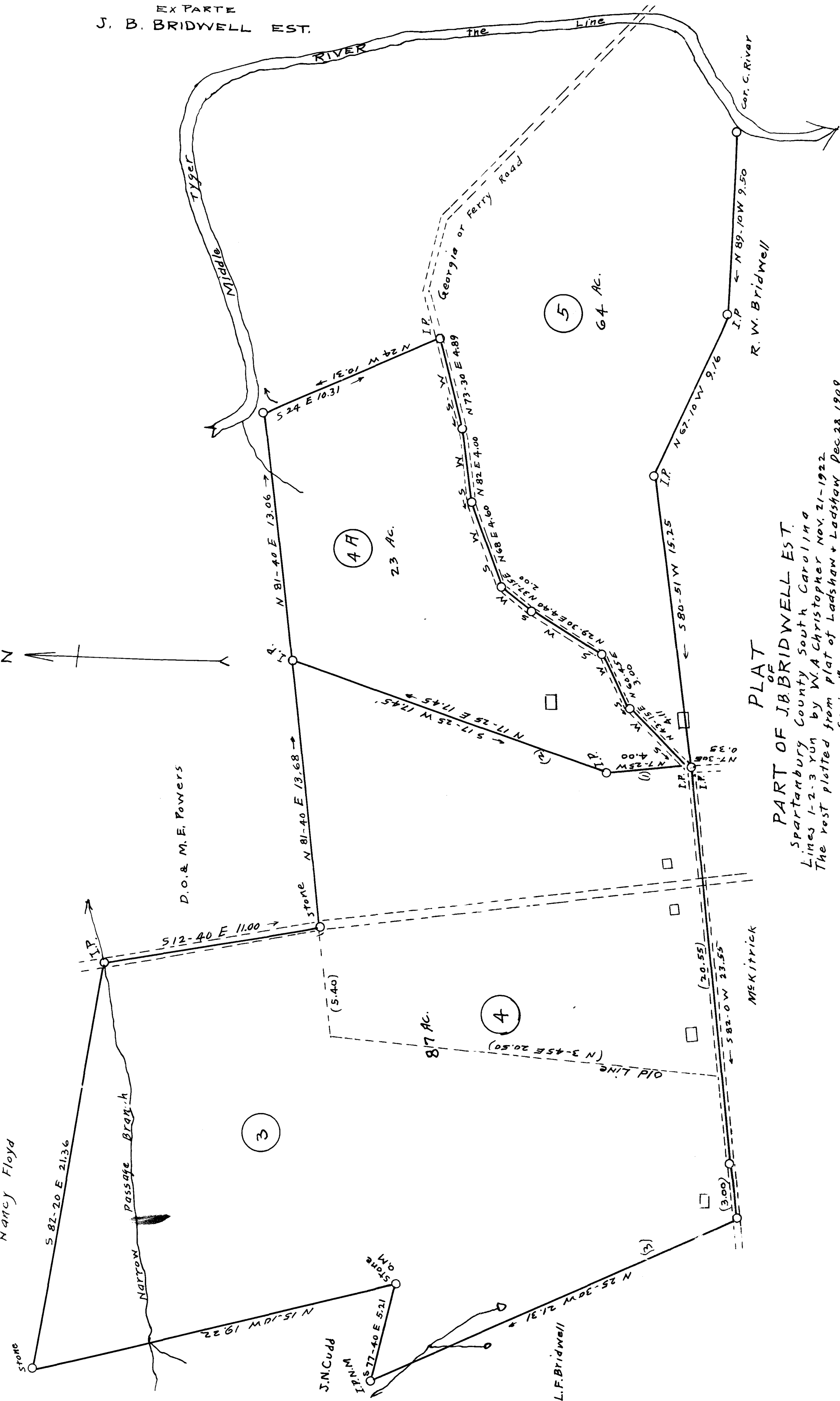


EX PARTE  
J. B. BRIDWELL EST.



PLAT  
OF

PART OF J.B. BRIDWELL EST.

Spartanburg County South Carolina  
Lines 1-2-3 run by W.A. Christopher Nov. 21-1922  
The rest platted from plat of Ladshaw & Ladshaw Dec. 28, 1909

Scale 1" = 400'

NOTE:- PART OF LOT No. 4 is added to lot No. 3 = 87A. Lot No. "4A" is a part  
OF ORIGINAL lot No. 4. W.A. Christopher, surv. Duncan, S.C.

Registered, Certified & Examined May 24-1927 at 10:36 A.M.