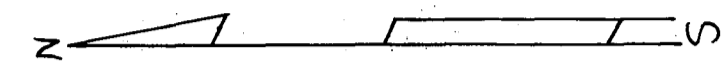
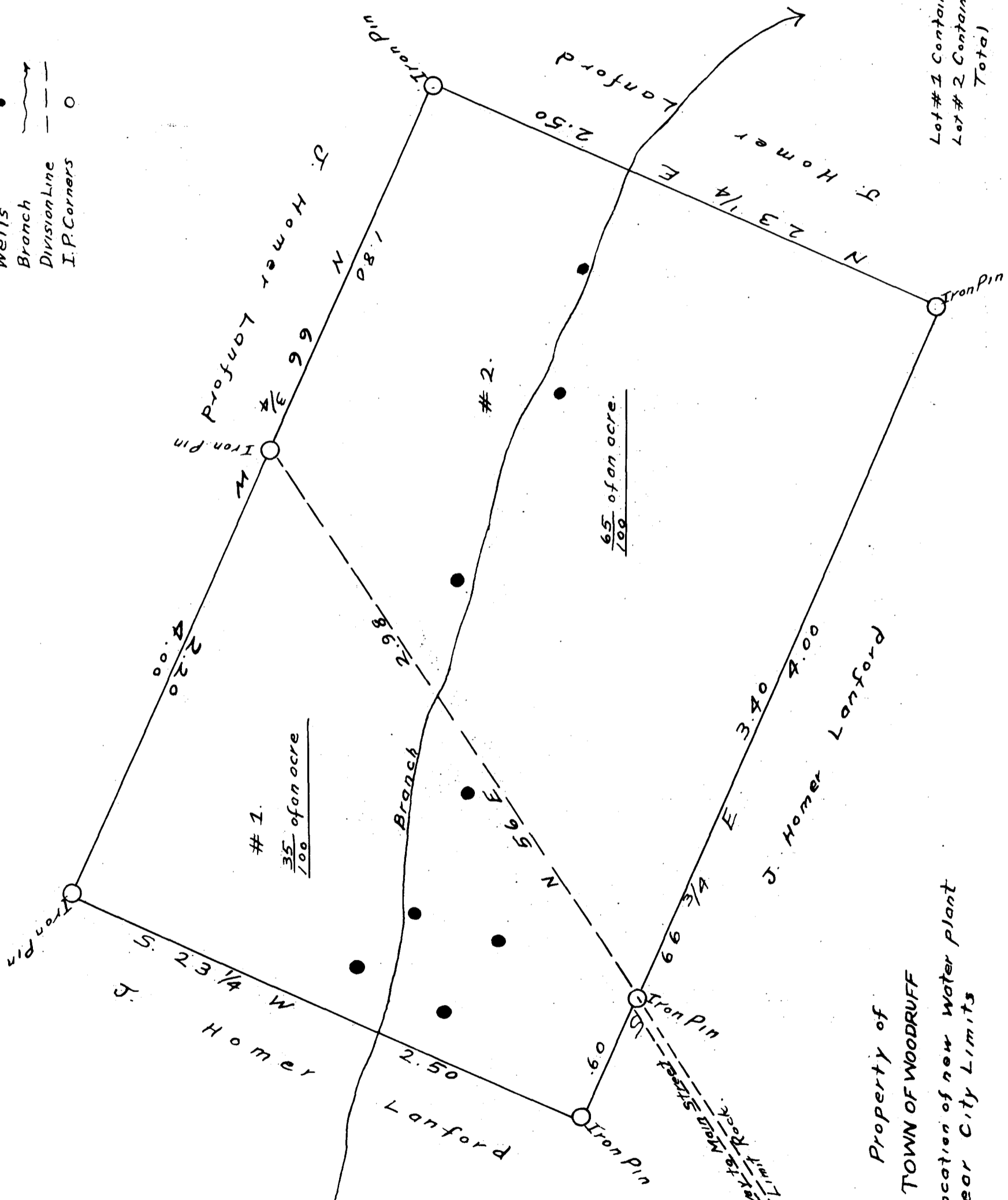


Ex Parte  
TOWN OF WOODRUFF



- Explanations:
- Wells
  - Branch
  - Division Line
  - I.P. Corners



Lot # 1 Contains .35 of an acre  
 Lot # 2 Contains .65 of an acre  
 Total 1.00 Acre.

# 1.  
 $\frac{35}{100}$  of an acre

# 2.  
 $\frac{65}{100}$  of an acre.

Property of  
 TOWN OF WOODRUFF  
 Location of new Water Plant  
 Near City Limits

Surveyed: July 23, 1927  
 Antie S. Anderson  
 Surveyor

Registered, Certified, and Examined Aug 2-1927 at 10:04 AM.

Scale: 50 Links per inch.