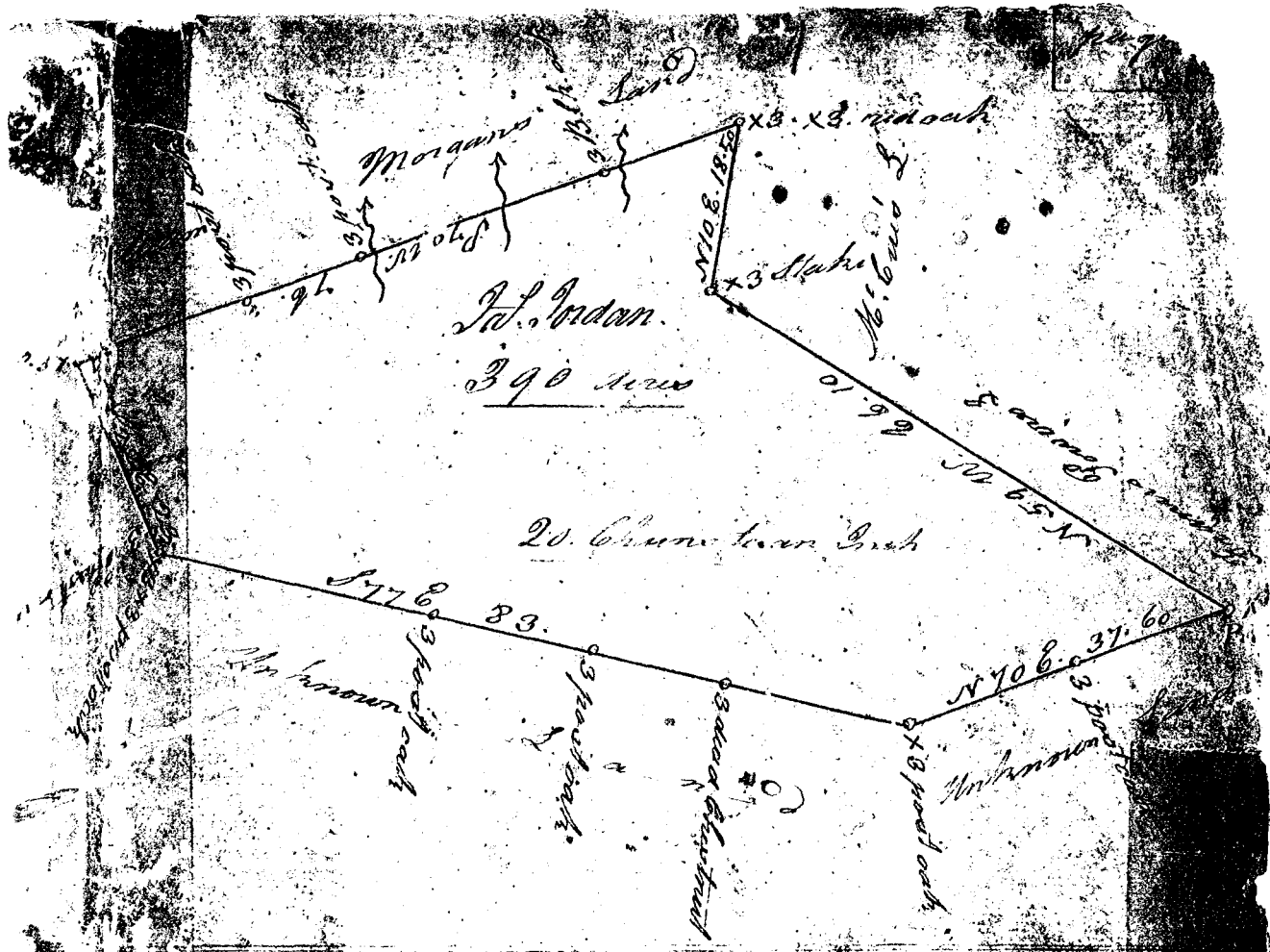


Received of the Surveyor General of the State of Missouri
 the following description of a tract of land
 situated in the County of St. Louis
 to wit
 A certain tract of land bounded
 on the north by the
 on the east by the
 on the south by the
 on the west by the
 and containing
 acres
 more or less
 as shown on the
 above plat represents - Surveyed the third day of
 April 1802

Received the 6th
 of April 1802. }

By Gal. Benson Esq.
 Surveyor General

Read by Surveyor



A warrant from James Powell
 the owner of Louisiana for the district of Sparta
 dated the first day of March 1802. The same
 being out unto James Jordan Esq. a tract
 containing three hundred & ninety acres
 the east of Spartanburg on the branch
 of the river bounded by a line running N. W.
 to James Powell's land N. E. by N. W. to
 William Moraine's land, or all other land by
 unknown land & hath such form & marks as the
 above plat represents - Surveyed the third day of
 April 1802 -
 Done the 6th
 April 1802. }
 By Gab. Benson Esq.