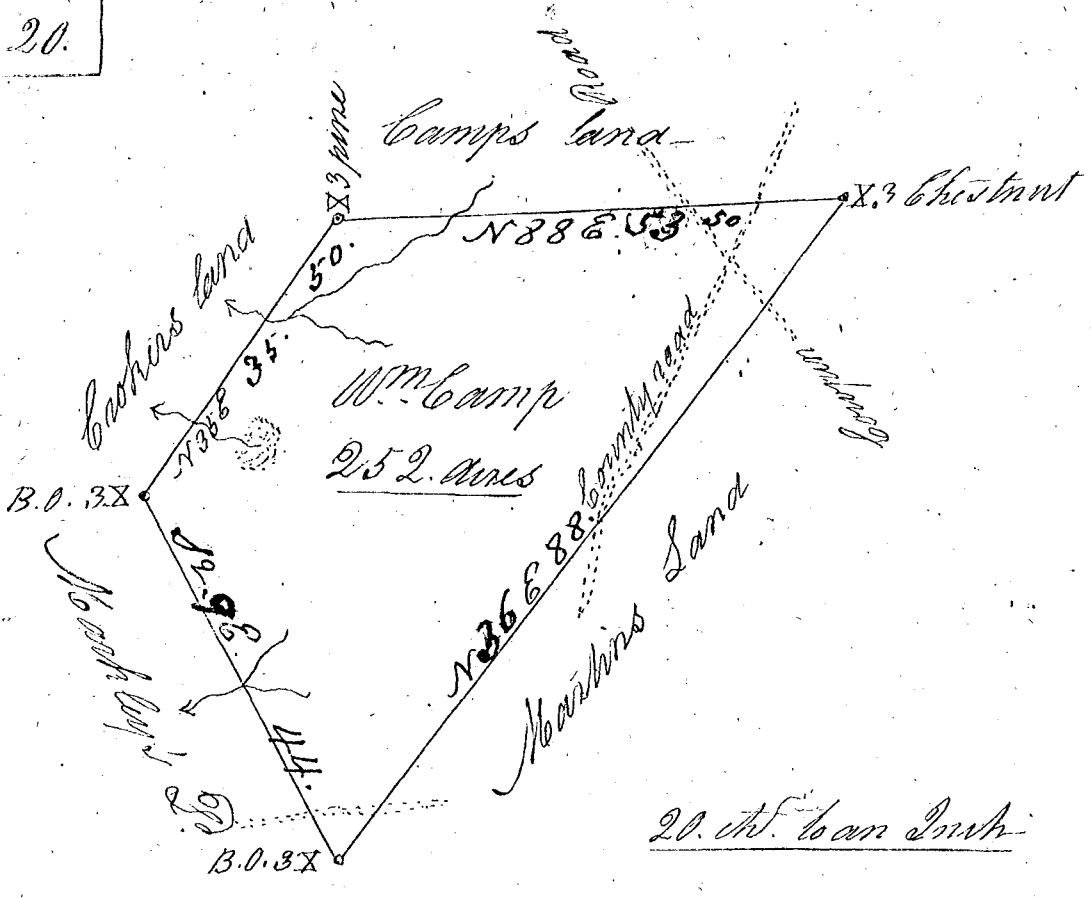


Page 20.



S. Carolina

Pursuant to a warrant from James Smith Commissioner of Locations in the district of Spartanburgh dated September the tenth day 1802. I have measured and laid out unto William Camp a tract of land containing two hundred & fifty two acres Situate in the said district on Lane creek waters of Whitteky bounded by a line running N. W. by lands Survey'd for Mackley N. E. by Jacob Brothers & Camps land and hath such form & shape as the above plat represents Survey'd the 15. th day of October 1802

Recorded the 9th day of November 1802

By J. Camp. D.S.

Fees paid in full 10.