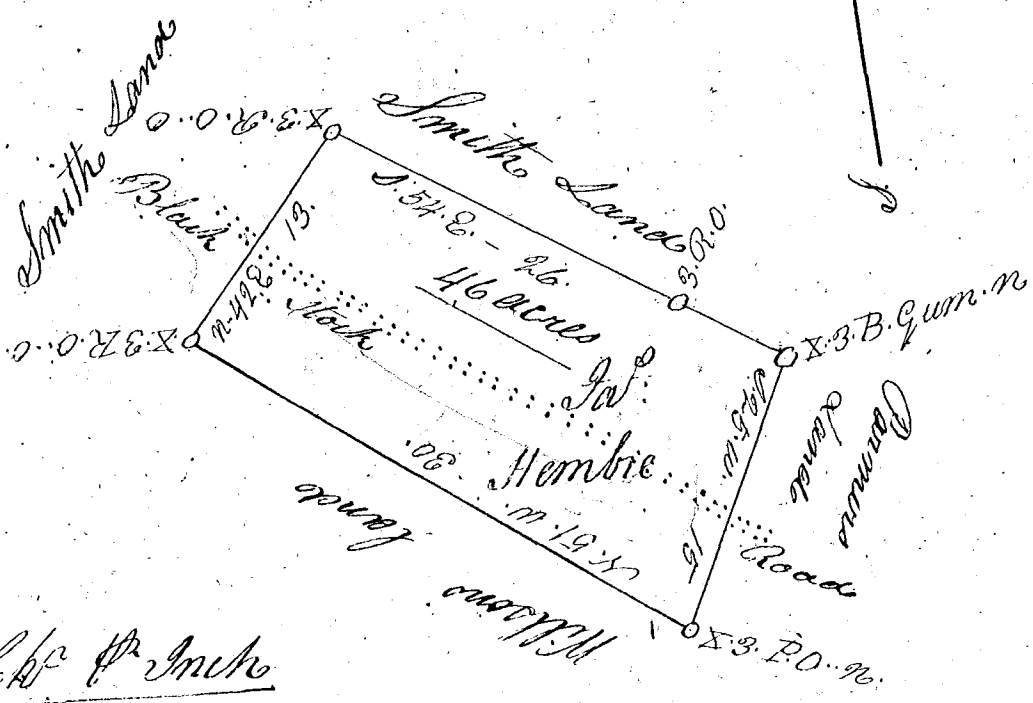


148



10 Eas of Smith

South Carolina Spartanburgh District
 Pursuant to a warrant from James Smith commissioner
 of Locations for the District aforesaid dated
 28th of November 1804 I have surveyed for
 James Hembree a tract of land containing 46 acres
 situate in the District aforesaid on both sides
 of Blackstocks Roads bounded N.W. by Smith land
 N.E. by Smiths land S.E. by Palmers land
 S.W. by Willsons land
 and hath such form shape & marks as the
 above plat represents

Surveyed the 29th November 1804

Recorded the 29th } By JAMES SMITH JUNR R.S.
 November 1804

see p. 107