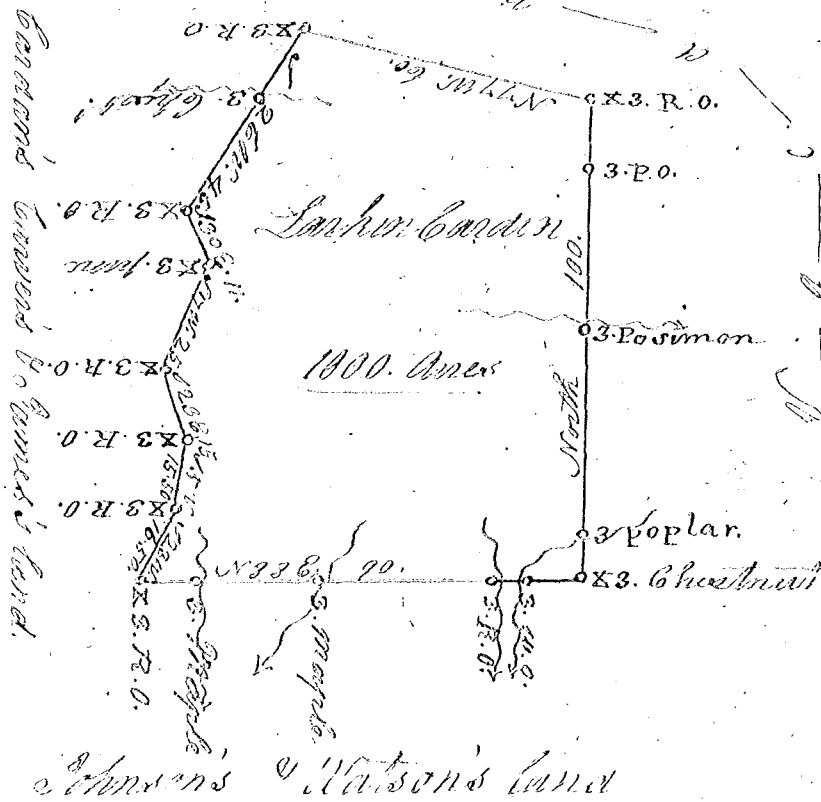


171

40. 60. 70. 80. 90. 100. 110. 120. 130. 140. 150. 160. 170. 180. 190. 200.



of Carolina
parton. district.

Pursuant to a warrant from James Smith Com.
of locations for the said district bearing date the
19th day of May 1805. I have survey'd for Larkin
Cordin a tract of land containing one thousand
and one hundred and thirty six acres in the said district on
several small branches of Shoally Creek a
branch of Sawyers fork of Puchel'd river bound
ed West by Cordin's land Carvers land
James's land, South by Johnstons and Wat-
sons land & all other sides by Vacant or un-
known Land. I hath such shape form and
Marks as the above Represents. Survey'd the
20th day of May 1805.

Recorded the first
day of June 1805.

134 J. J. Smith Junr
Surveyor