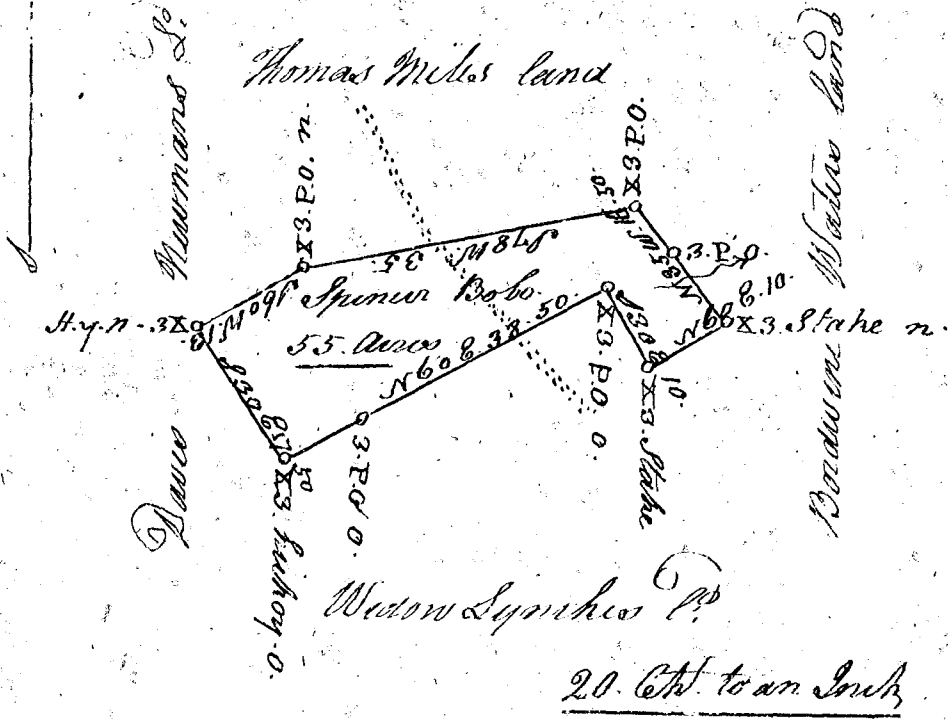


185.



S. Carolina.

Pursuant to a warrant from James Smith Comptroller of locations for the district of Sparta bearing date the 3<sup>rd</sup> day of December 1805. I have Survey'd for the Reverend Spencer Bobo. a tract of fifty five acres of land Situate in said district on a branch of Enore River bounded N<sup>o</sup> by Thomas Miles land East by Boardswain Waters land S. by Widow Lynch's land West by Dance Nuwman's land & hath such shape & markers as the above plat represents Survey'd the 5<sup>th</sup> day of December, 1805.

Recorded the 12<sup>th</sup> day of December 1805.

By  
J. P. Wofford D.S.