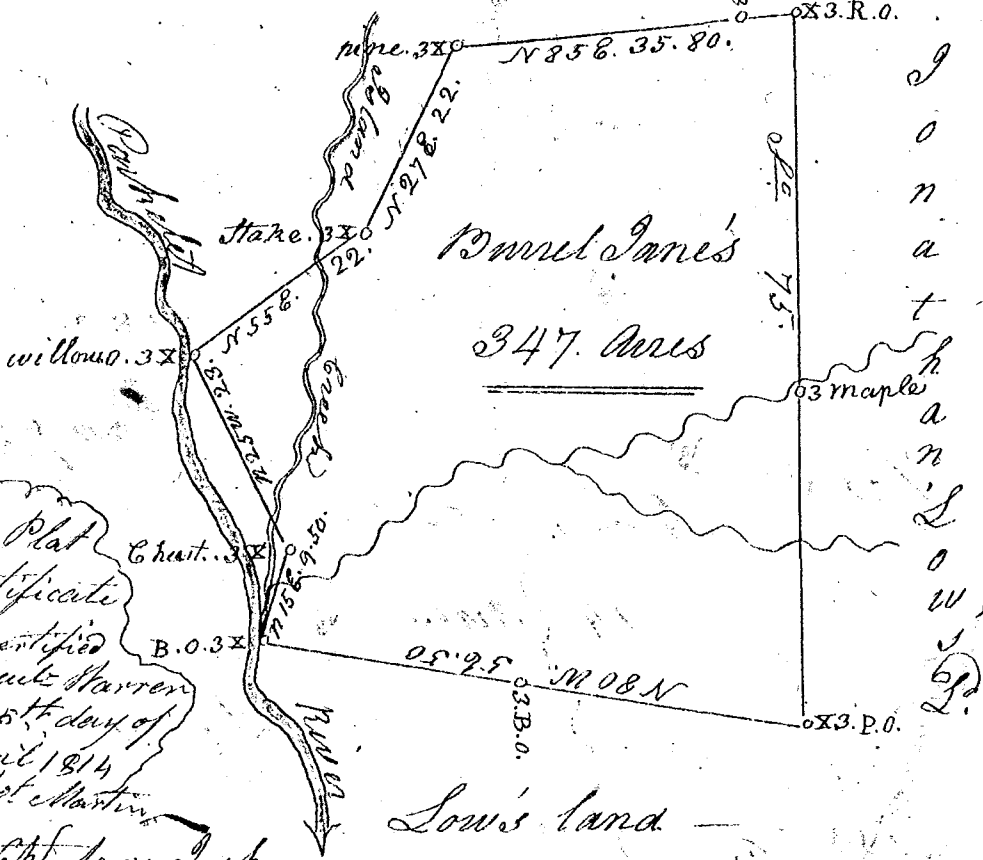


235.

Reuben Warren's land



This Plat & Certificate was certified for Reuben Warren the 25th day of April 1814 Det. Martin

20. Ch. to an Irish

S. Carolina Spar-
lanburgh district }

Pursuant to a warrant from James Smith, Esq. of Commissioners of locations for said district bearing date the 16th day of February 1807. I have admeasured and laid out unto Burrel Jane a tract of land containing three hundred & forty seven acres situate in said district on the land creek of Pacholee river bounded N. by Reuben Warren's land S. & East by Louis's land N. W. by Wm. Garret's land & hath such shape & marks as the above plat represents Survey'd the 18th day of February 1807. By

Henry Warner D.S.

Provided the 20th day of April 1807. }