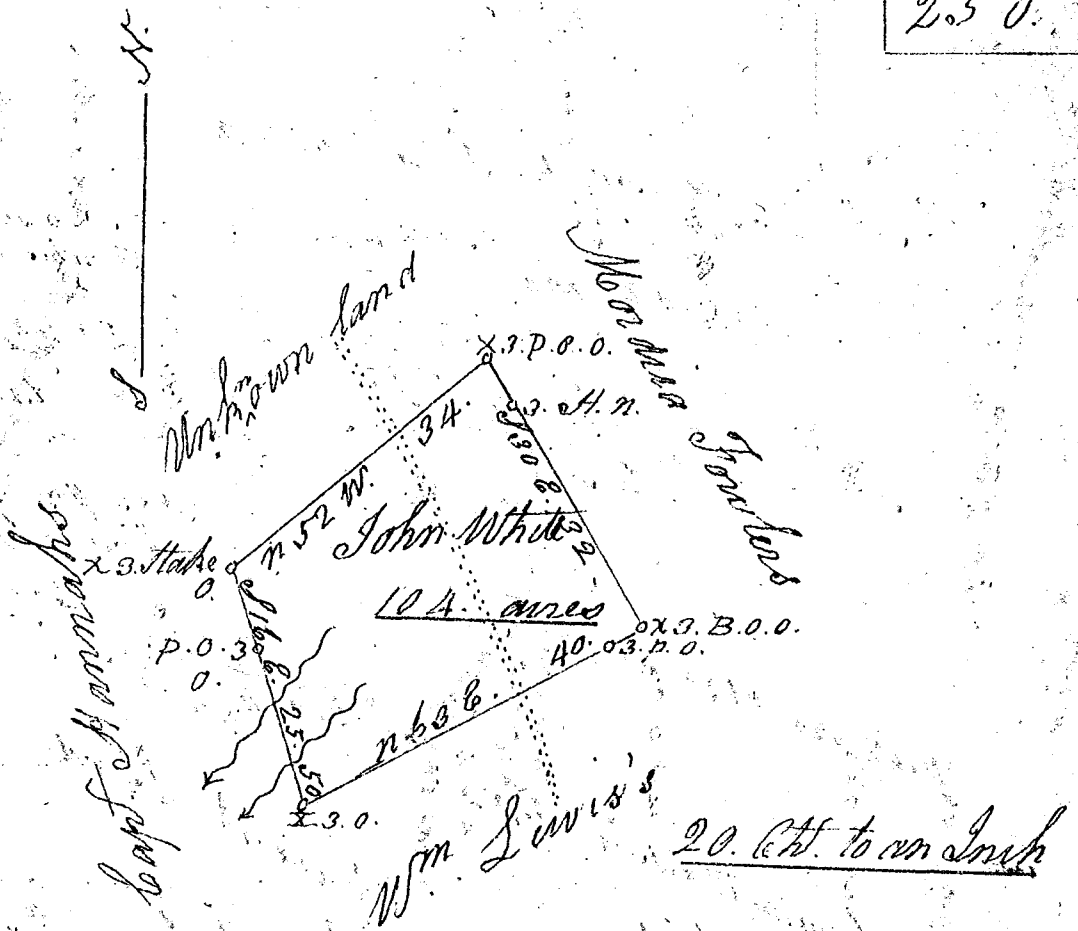


250.



S. Carolina

Pursuant to a warrant from James Smith Com. of locations for Spartanburgh district bearing date the 19th day of November 1807. I have admeasured and ~~cut~~ laid out unto John White a part of land containing one hundred & four acres Situate in said district on branches of Dutchmans creek bounded S. W. by Wm Lewis Land N. E. by Fowlers land S. W. by Captain Hannah's land & N. W. by unknown lands & hath such form and marks as the above plat represents - Surveyed the 23rd day of November - 1807 -

Moses White
John White Jun } Ch. bearers -

By
Rich^d Thomson
D. S.

Recorded the 7th day
of December 1807 }