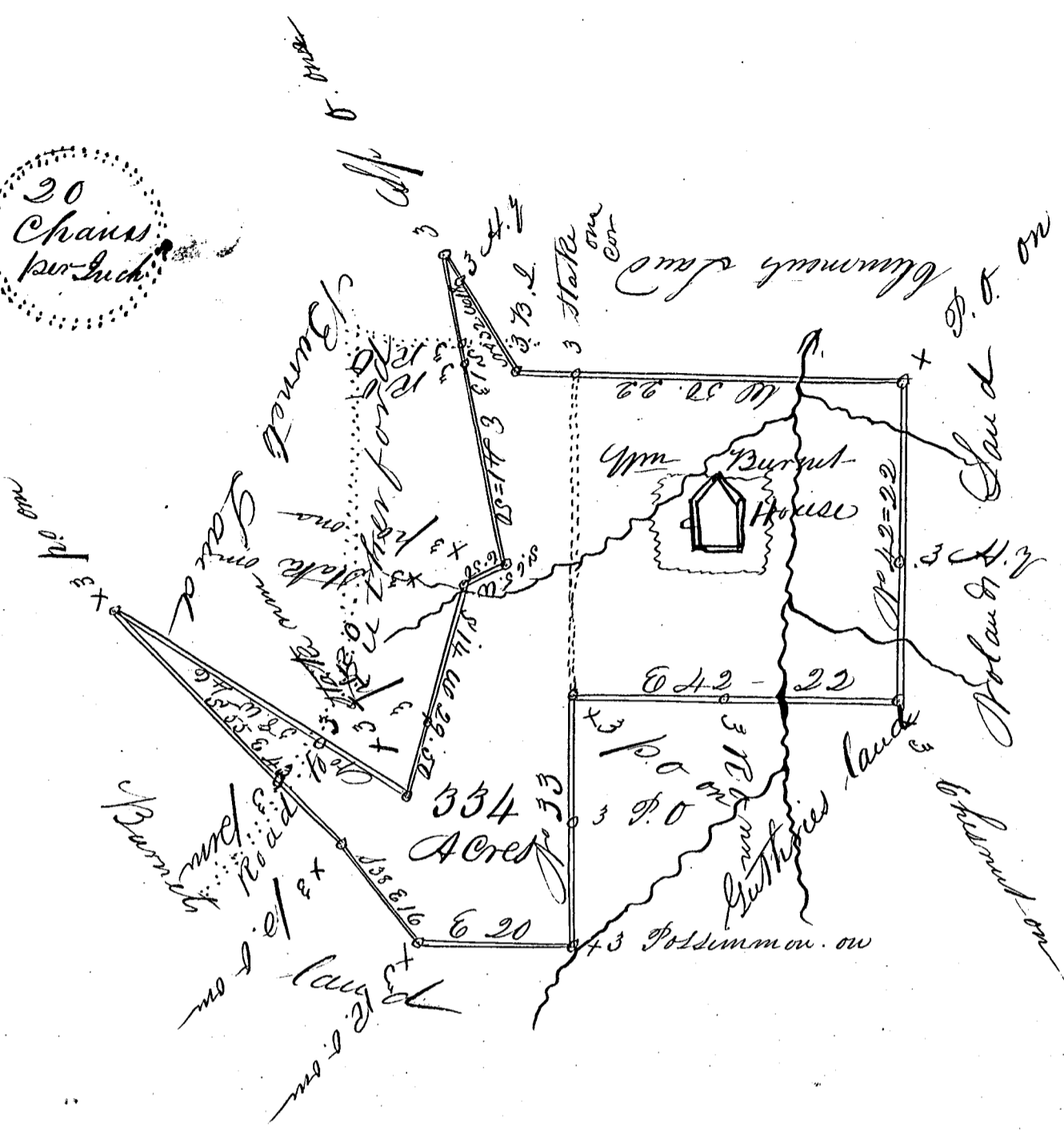


8

20
Chains
per Inch



South Carolina Pursuant to a warrant from Judge
Spartanburgh Dist 3 Galt Esqr. Commissioner of Location
for said District dated 9th day of August 1836

I have admeasured and laid out to William Burnet
a tract of land containing three hundred and thirty
four acres of land situated in said District on Thomas
Creek waters of Pacolet River bounded East by Polau's
land North by Blommers land West by James Burnet's
land South by Guthrie's land and land belonging
to the Estate of Mrs Burnet dec^d and hath such form
and marks as the above plat represents

Surveyed the 11th day of August 1836
The land East of the dotted line
is owned and possessed by Mrs James Smith
Burnet and he wishes to obtain
a Grant for all in the plat together

Jemuel Blommers Chain
Woodson Burnet 3 Beares

Recorded the 13th day of August 1836
Fee of 2.12 1/2 not