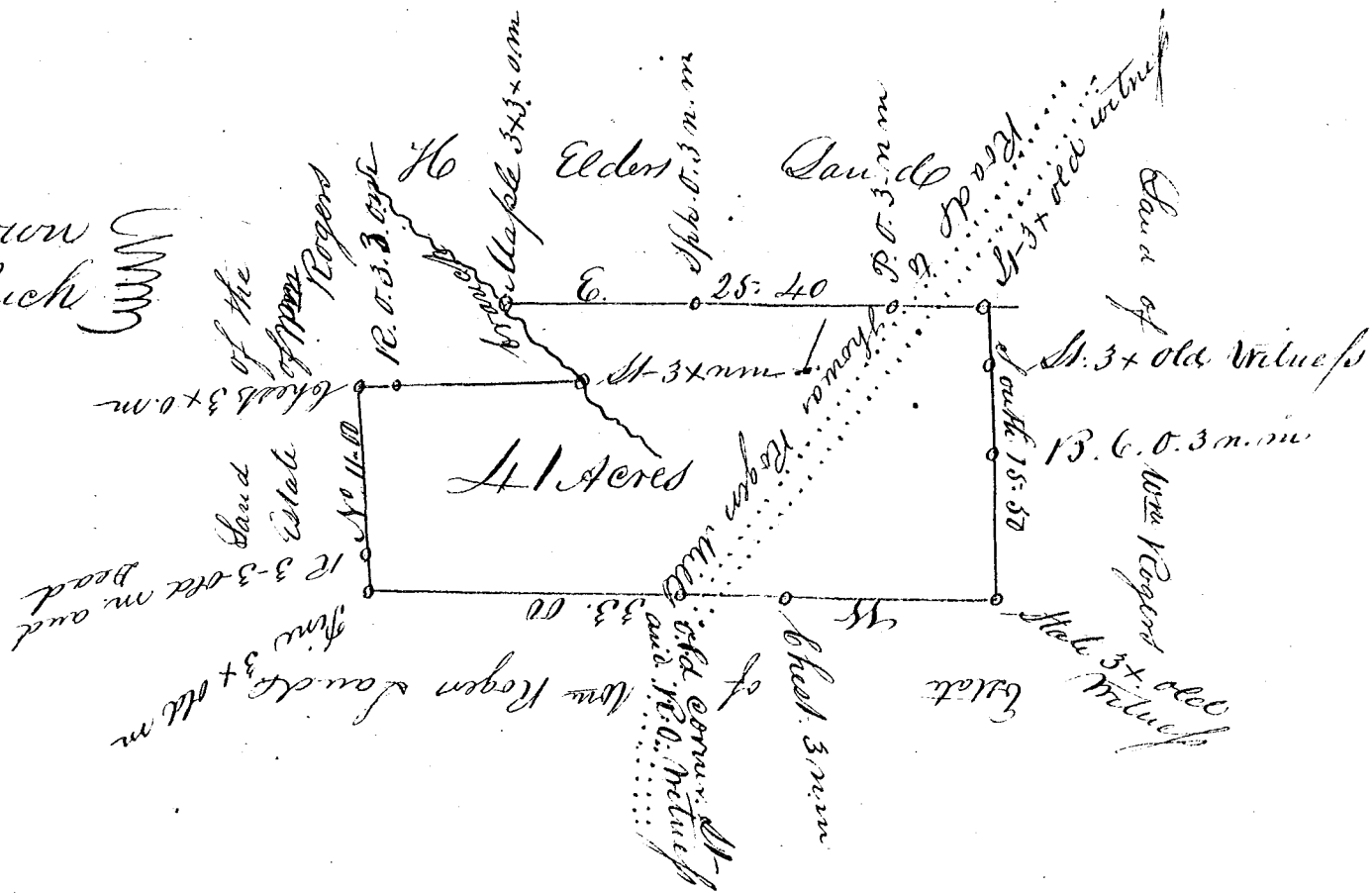


Said down
10 Cts per Acre



South Carolina
Spartanburgh District

Pursuant to a warrant from Jabez Galt Esq. Commissioner of Locations for S^d District dated the 26th May 1837 I have admeasured and laid out unto Simpson Ortry a Tract of 41 Acres of Land lying on both sides of the Road leading from the Blackstock's Road to Thomas Rogers Mill in said District having such shapes and Boundries as the above Plat represents Surveyed June 2^d 1837

Thomas A Rogers
Thomas Howlers

George Nickolls, D.S.

Recorded the 5th June 1837

Sees
\$2,12 1/2 Paid