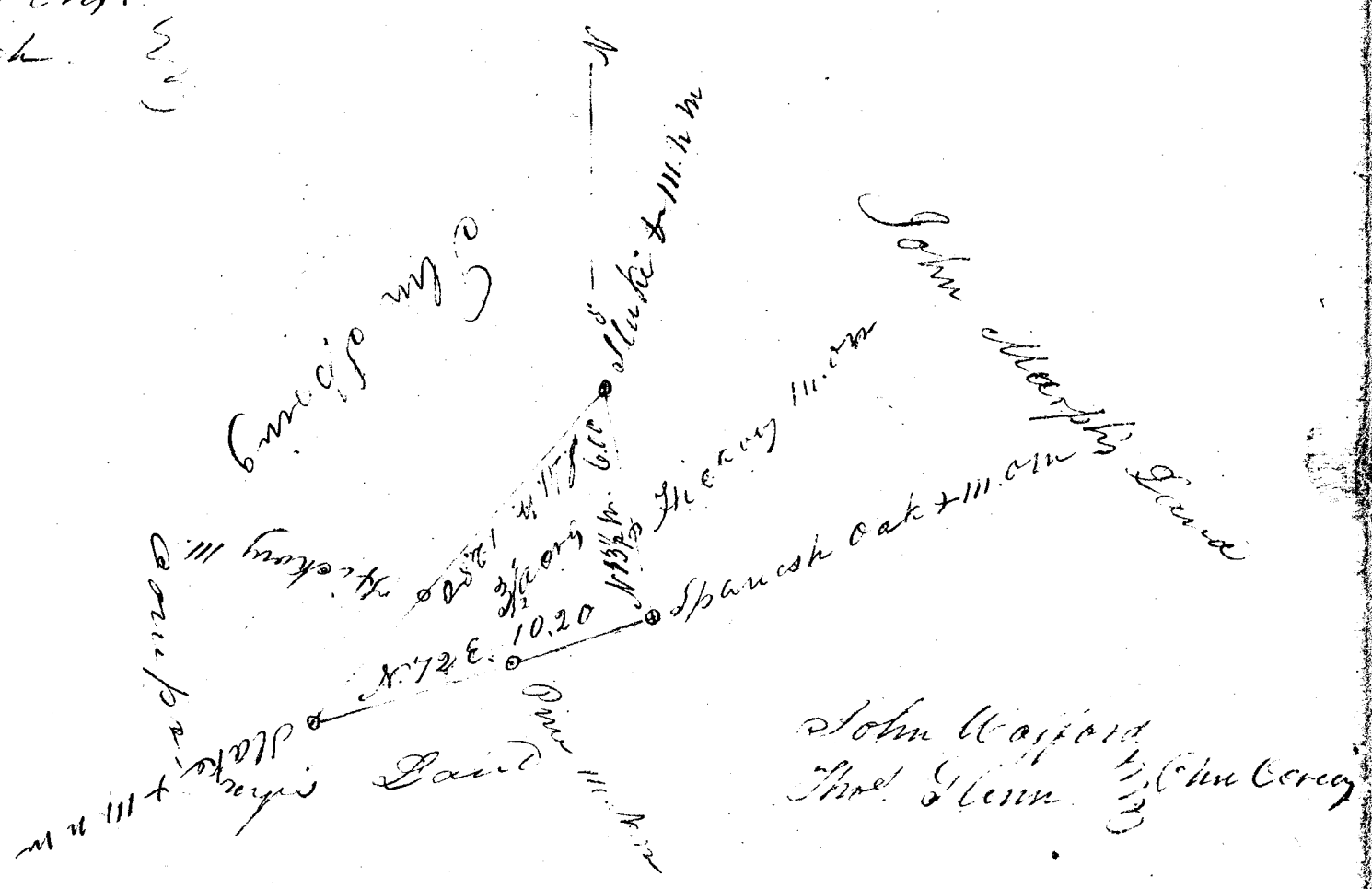


Scale of 5 Ch.
per Inch.



South Carolina

Pursuant to a warrant from John Galt Com. missioner of Locations in the District of Spartanburgh dated the 9th day of November 1837, I have accompanied and laid out, with John Glenn a tract of Land containing three acres and one half, situate in Spartanburgh District on the South Side of Fair ^{Spring} Creek bounded on a line running North West by John Murphy's Land and on all other Sides, by the Glenn's Spring Camps Land and with such form and marks, as the above plat represents Surveyed the 11th day of November 1837.

Richard Thomson D.S.

Recorded 30th December 1837.

For \$2.12/2
Paid