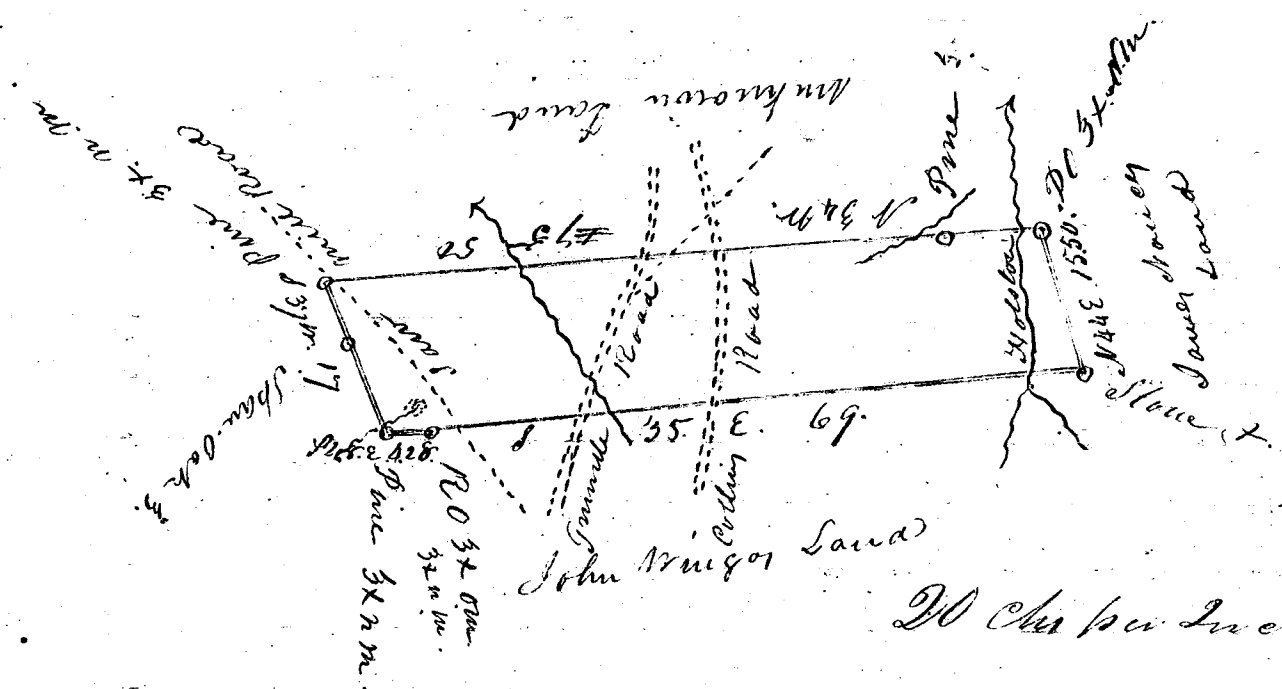


240



20 Ches per Inche

South Carolina Pursuant to a warrant from Judge  
 Spartanburg Dist. Valt. Commissioner of Locations in the  
 District of Spartanburg, dated the 7<sup>th</sup> of January 1839, I have  
 examined and laid out into Land Betts a tract of Land  
 containing one hundred & twenty three acres, situate in the  
 said District, on Holston Branch, the waters of Fair Forest  
 bounded by a line running S. E. lands surveyed for John Wingor  
 N. E. by James Nance's Land and on other sides by Lands  
 unknown - and hath such form and marks as the above  
 plat represents as Surveyed 8<sup>th</sup> of July 1839 -  
 John Snoddy D.S.

For \$212 - Paid

Recorded 21<sup>st</sup> of January 1839