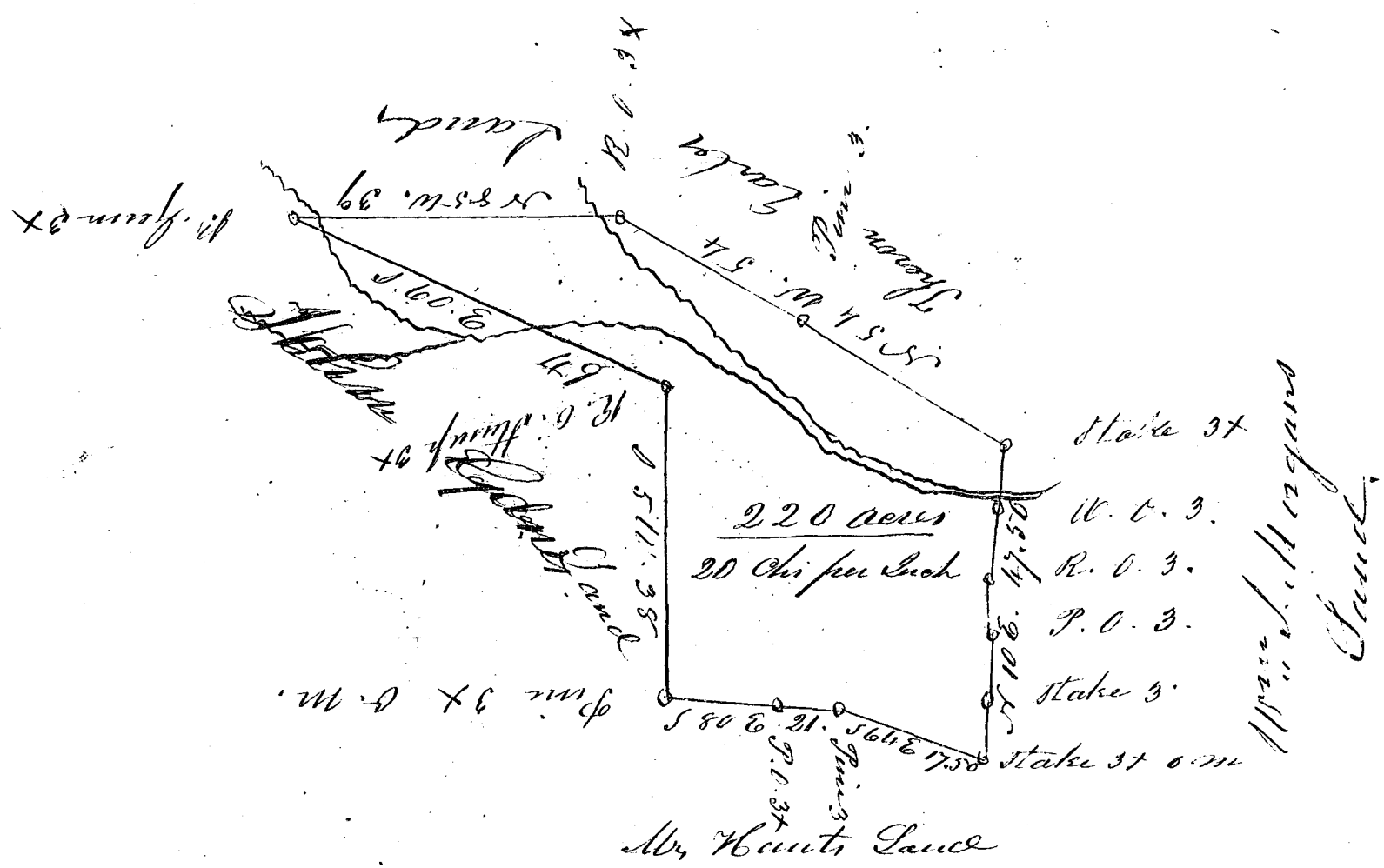


68



South Carolina.

Pursuant to a Warrant from J. Sapp Esq. Commissioner of Locations in the District of Spartanburgh, dated the 11th day of February 1841. I have not measured and laid out into the Landford's tract of Land containing two Hundred and Twenty Acres situate in said District in branch waters of North-Spartanburgh River bounded by lines running N.W. by lands of Shron, E. and S.E. and S.W. by lands of John Gains and Wth Hunt, and N.E. by lands of Wth G. Morgan, Having such sum and marks as the above plat represents February 16th 1841

J. Sapp Esq. Surveyor

W. G. Sappford
S. D.

Recorded