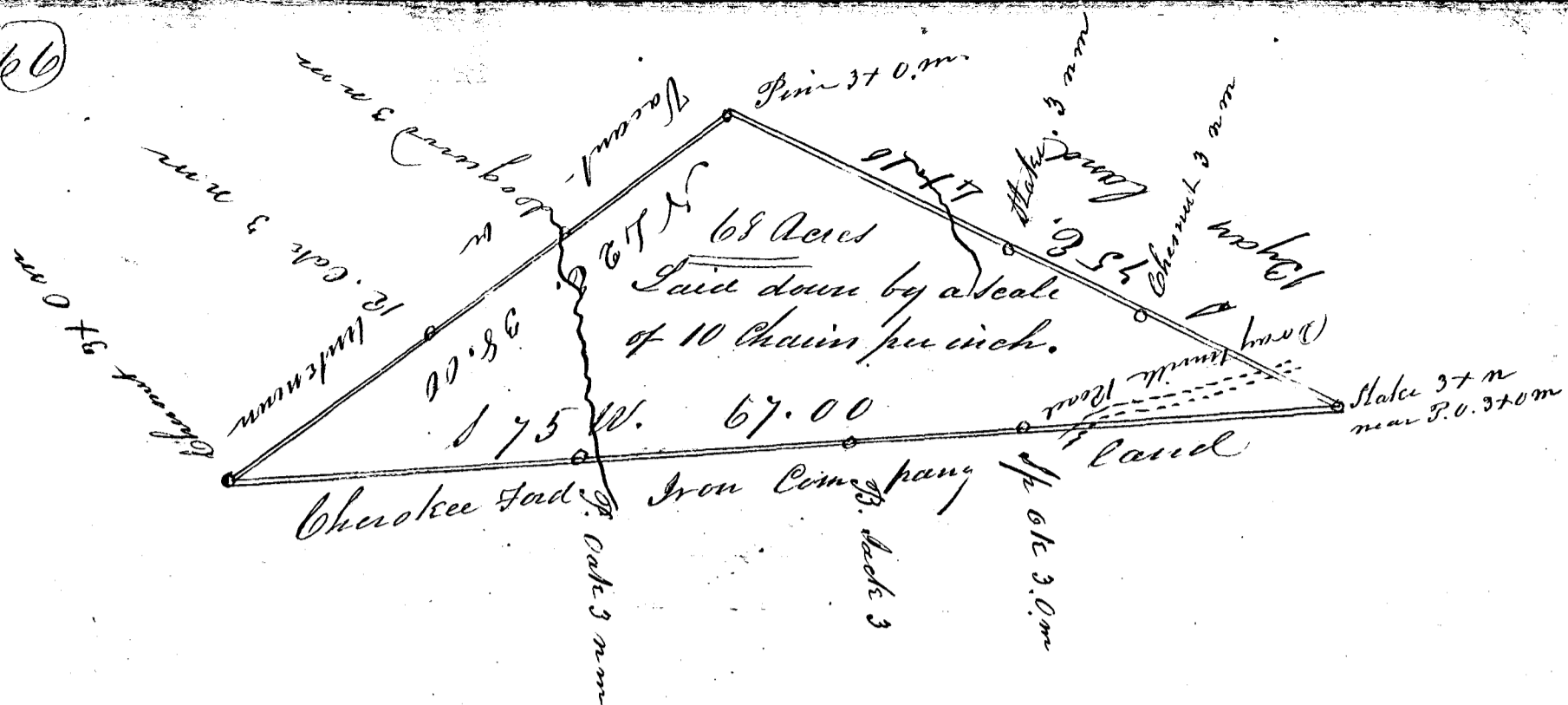


66



South Carolina.

Pursuant to a Warrant from Joshua Saffers Esq. Commissioner of Patents for the District aforesaid dated the 5<sup>th</sup> day of April 1844. I have Admeasured and Laid out unto John Byars, A tract of Land containing Sixty Eight Acres situate in the District of Spartanburgh & Union, on the branches of Gilkie's Creek, Waters of Broad River, bounded on the N.E. side by and belonging to the Cherokee Ind. Iron Company, and on the S.W. Side by Lands belonging to said Byars, and on the S.E. side by Vacant or Unknown Land, and hath such form and marks as the above Plat Represents.

Surveyed the 12<sup>th</sup> day of April 1844

per J. D. Camp

J. D. Camp  
Deputy Surveyor

Recorded 10 May 1844

J. Tapp. C.S. S.D. So. Car.