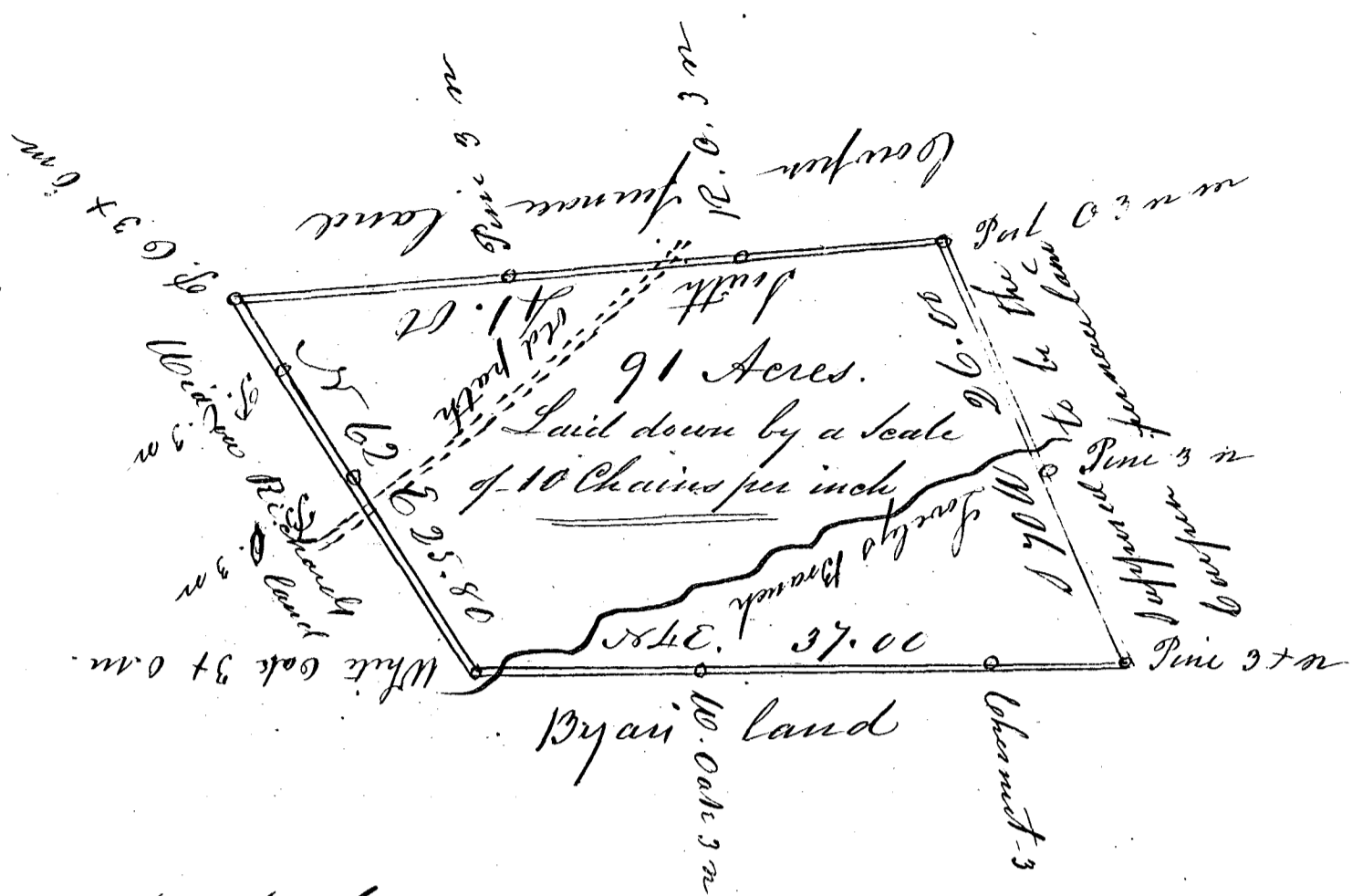


68



South Carolina.

Pursuant to a Warrant from Joshua Tappan
Commissioner of Locations in the District of Spartanburgh
dated the 6th day of April 1844.

I have admeasured and laid out unto
John R. Richards a tract of land containing Ninety One
Acres situate in said District, on Lovelys branch, of Thicketty
Creek, Waters of Broad River, Bounded on the South side
South side, by land belonging to the Widow Richards
and on the North & West by lands belonging to the
South Carolina M. Company and on the East by Bryan
land and hath such form and Markes as the above plat
Represents, Surveyed the 10th day of April 1844.

P. Quinn Camp
D. Surveyor,

Fee \$2.25

Recorded 10th May 1844.

J. Tappan
C. D. S. C.