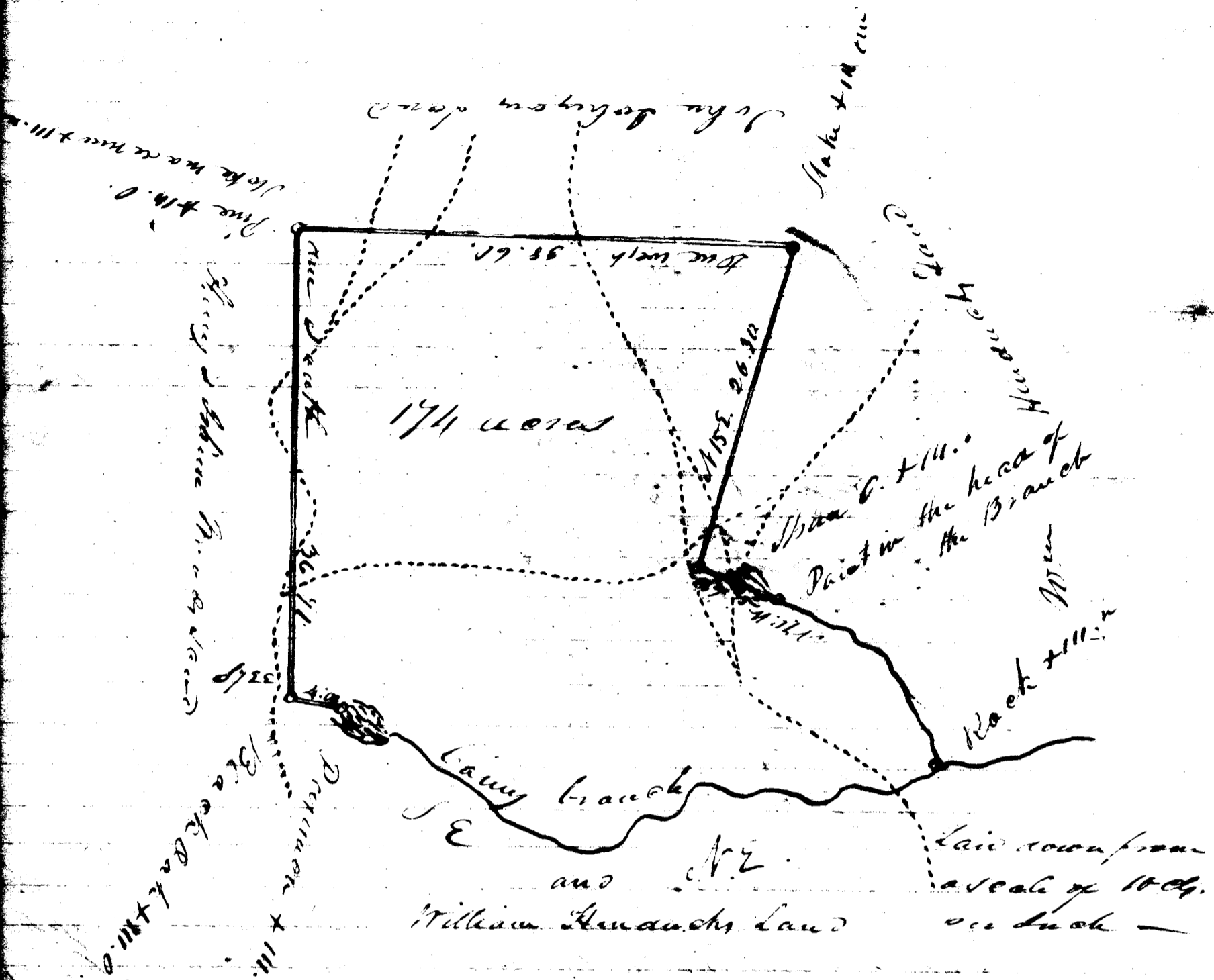


76



South Carolina

Pursuant to a warrant from the Hon. John G. ...
 Esq. Office Commissioner of Land in the District of South Carolina
 under the tenor of which day of December 1841. I have addressed
 and laid out unto Territorial claim a tract of Land containing
 one hundred and twenty-four acres situated in the said District
 on the head of Abney Creek, location of Square River, bounded by
 a Branch a line ranging of 1/4 M. by Land surveyed for W. H. H. H.
 at E by Land surveyed for said H. H. H. West by Land surveyed
 for John Johnson South by Land surveyed for King and John
 Howard E. & N.E. by a line and branch by Land surveyed for
 said W. H. H. H. and hath in the form and manner as the
 above plot represents & surveyed 29th December 1841.

This is for the purpose of obtaining a new Grant & being
 originally counted

for \$2.25 Paid.

Willis D. Melkela
 Deputy Surveyor

Recorded 13. Aug 1842.