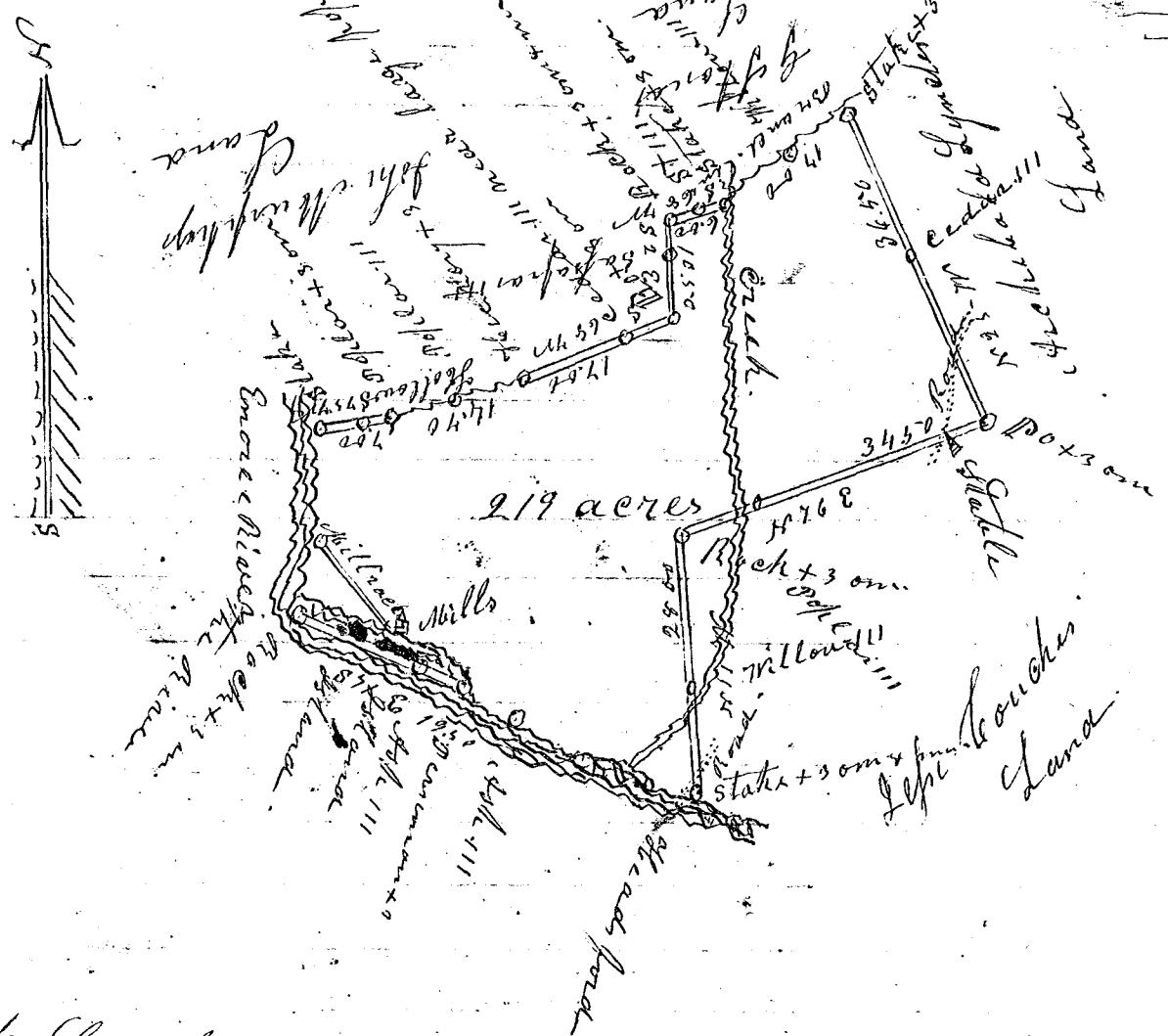


109

20 ch / 1 in



South Carolina pursuant to a warrant from J. B. Tolson  
 Spartanburg District 32. Commissioner of Location for Spartanburg  
 District dated the 18 day of October  
 1845 I have Admeasured and laid out unto Thviam  
 Markborough a certain tract of land lying in  
 Said State and District on the north side of  
 Enoree River including sundry Islands and fish  
 traps Also a mill containing two hundred and  
 nineteen acres bounded by lines running N<sup>74</sup>W N<sup>8</sup>E  
 by Lepe Couch N<sup>77</sup>W by Archibald Lynch S<sup>8</sup>E by  
 G Stone & John Murphy and South by Enoree River  
 and hath such shape and form Buttings and  
 Boundings as the above plat represents Surveyed  
 this 20<sup>th</sup> day of Oct 1845 - John Gibbs

Recorded the 14<sup>th</sup> Nov. 1845

Fees \$2.25