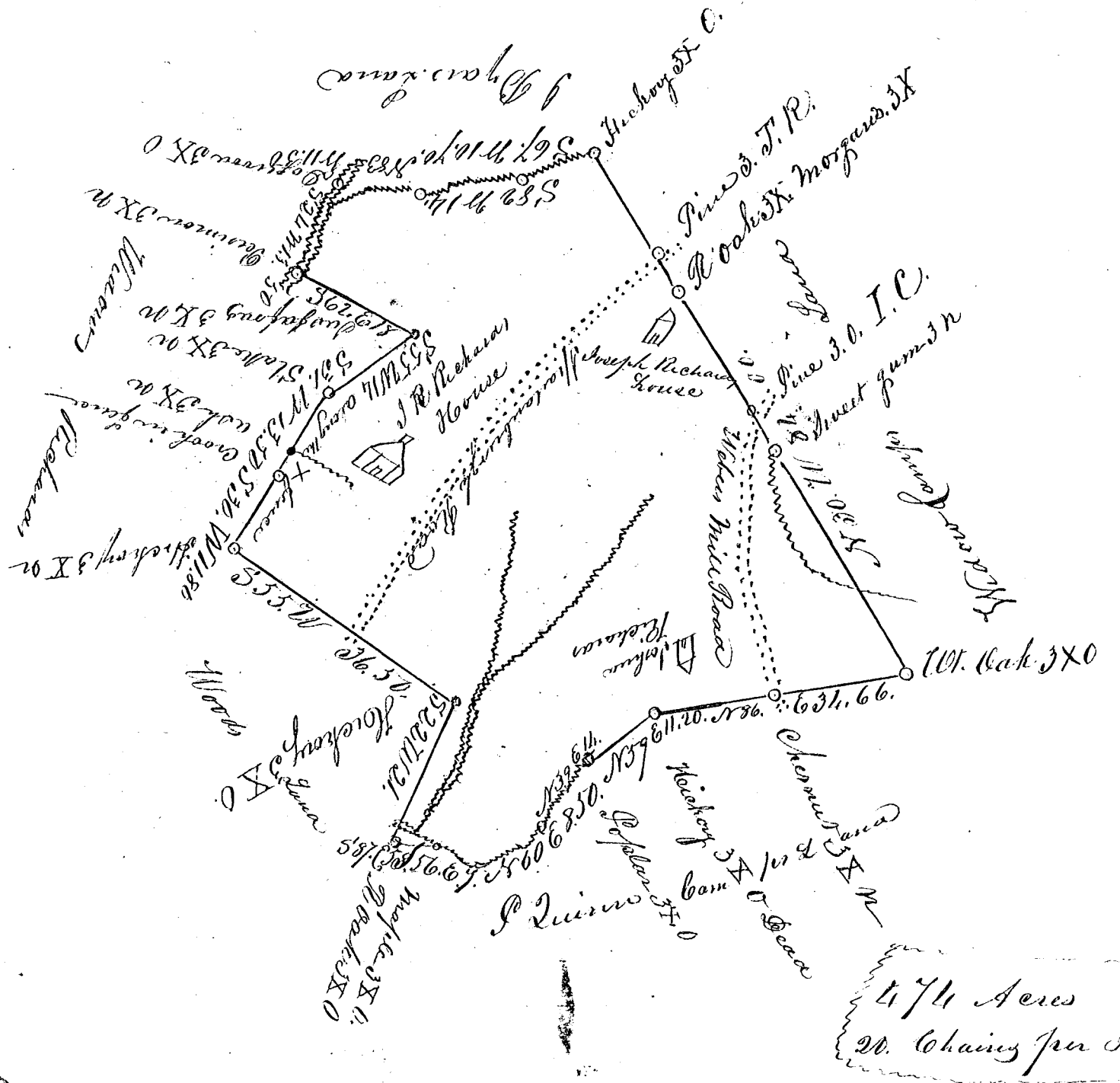


Col. J. R. Richards,  
Plat 474 Acres

(111)



South Carolina

Pursuant to a warrant from J. B. Hollenow Esq. Commissioner of Location in the District of Spartanburgh dated the first day of November 1845. I have admeasured and laid out unto J. R. Richards a Tract of Land containing Four Hundred & Seventy Four acres situated in the said district on Quinus Fork of Shutech Creek Waters of Broad River bounded on the S.E. by lands belonging to P. D. Camps. & on the N.E. by the widow Camps & N.W. by J. Bryan & Maria Richards & S.E. by Mrs. Woods land (this being old granted land and this done to obtain a new grant.) and I set such form and marks as the above Plat represents surveyed the 11<sup>th</sup> day of November 1845.

P. Quinn Camps,  
D. S.

Recorded the 23 day of December 1845.