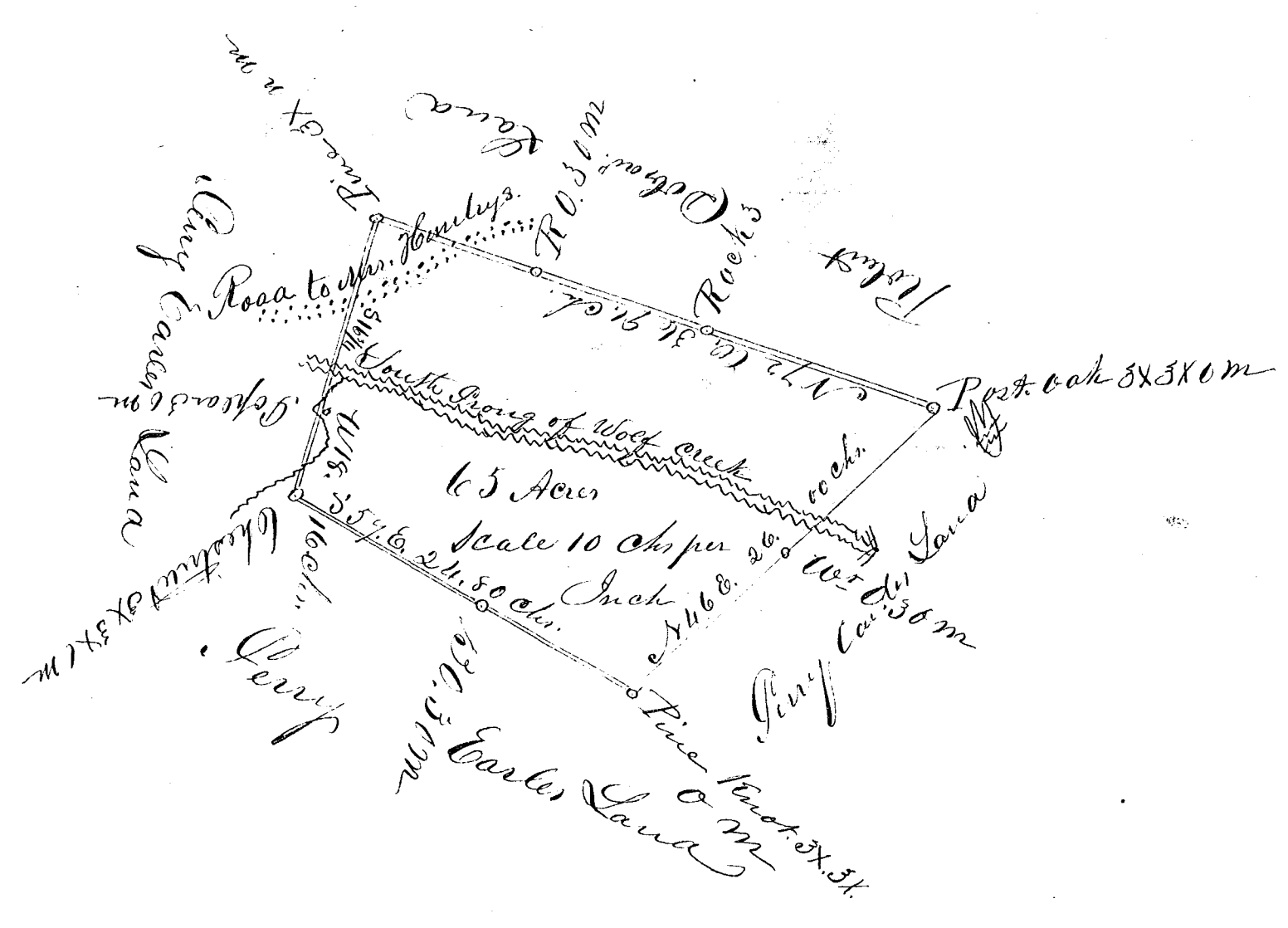


Robt Dobrow's
Platt
65 Acres

120



South Carolina

Pursuant to a warrant from J. B. Tolleson Esq. & Co. Commissioners of Location in the district of Spartanburg the 7th day of December 1846, I have measured and laid out unto Robert Dobrow a tract of Land containing sixty five acres situated in the said district on the South Prong of Wolf Creek Branch waters of North Carolina River bounded by a line running N.W. by Robert Dobrow Land S.W. & N.E. by land surveyed for Perry Carl and Kath such former land marks as the above plat represents surveyed 12 day of December 1846

Willis D. Shelkoff
G.S.

Recorded the 29th December 1846.