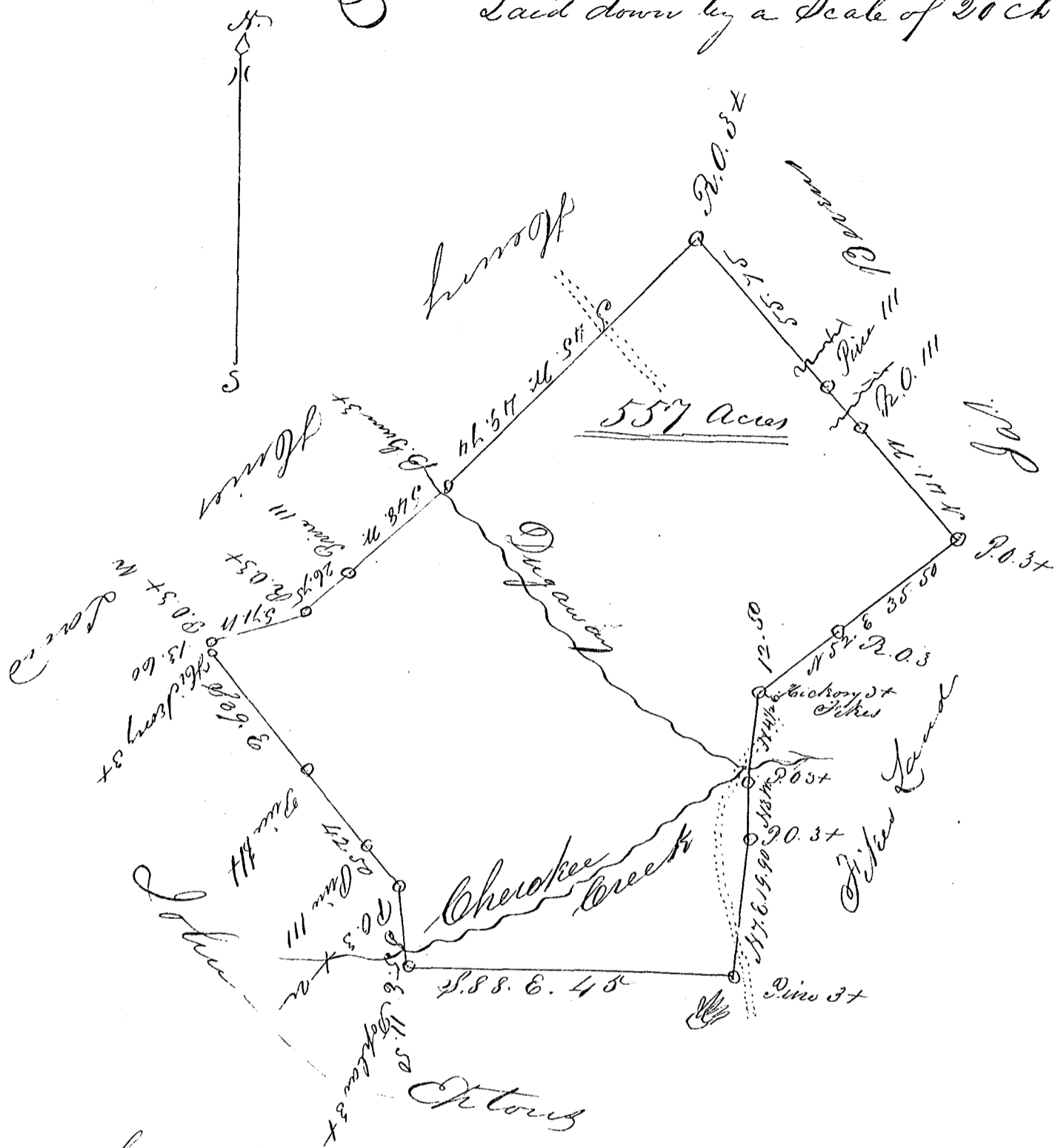


G. W. M. Leggo
Plat 557 acres

Laid down by a scale of 20 ch per Inch



South Carolina

Pursuant to a Warrant from the Commissioners of Locations in Spartanburg District, dated the 11th Sept 1847 - I have admeasured and laid out unto G. W. M. Leggo a tract of Land containing 557 Acres situated in the sd Dist, on both sides of Cherokee Creek including the Cherokee Springs, and hath such marks and boundaries as the above Plat represents

Surveyed 11th Sept 1847
W. N. Milbankes } Chain bearers
Jacob Eastler }

A. S. Camp. S. S.

Recorded 13th Sept 1847.