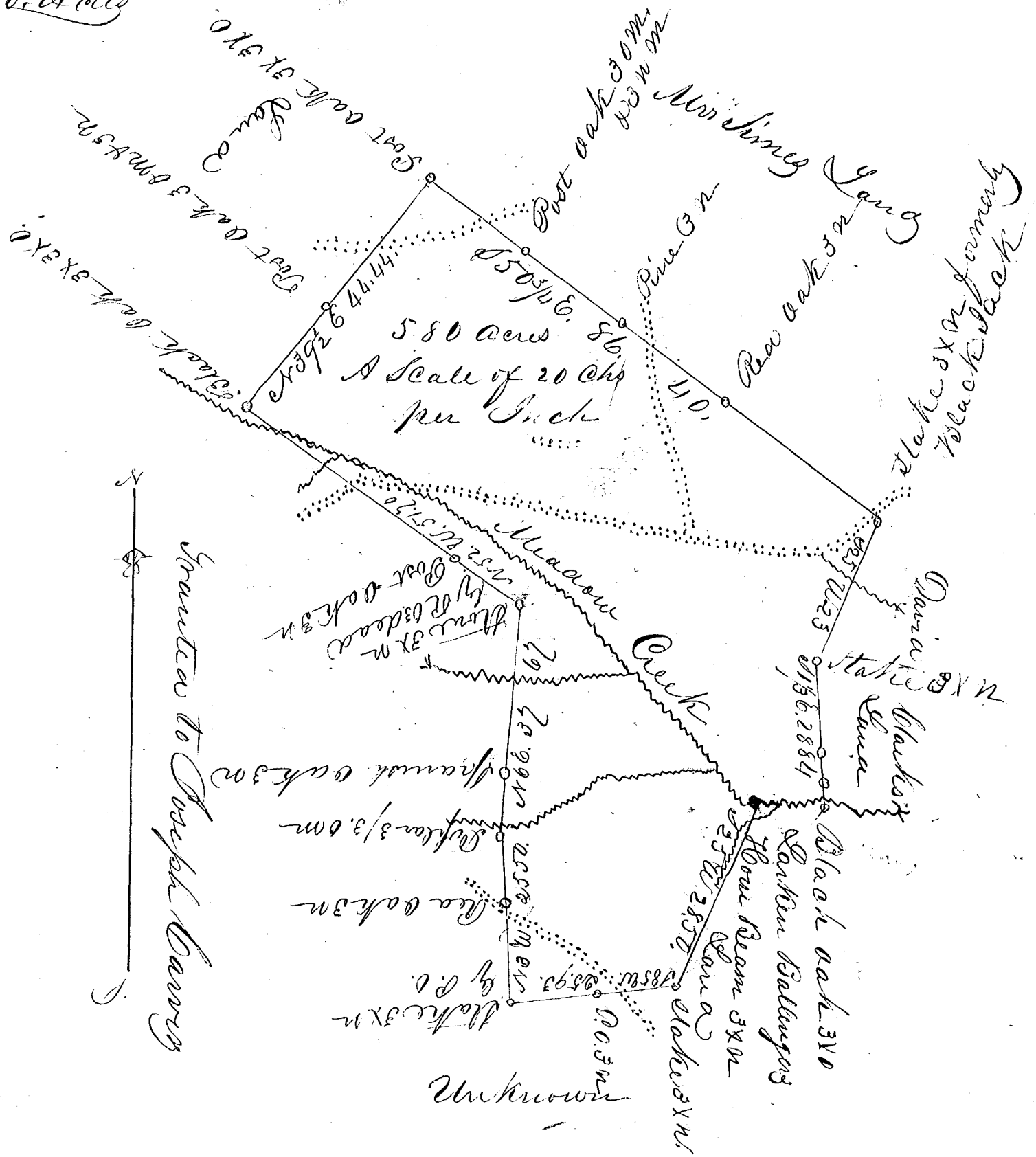


131-

John S. Finch,  
Platt 580. A. Aug



State of South Carolina,  
 Spauldenburgh District Pursuant to warrant from  
 J. H. Tolison Commissioner of  
 Location for Spauldenburgh District dated February 15-1848  
 I have admeasured and laid out to John S. Finch a  
 tract of land situated in Spauldenburgh District on  
 Meadow Creek waters of the South Fork of Pacolet  
 River containing Five Hundred and Eighty acres  
 Bounded by lands belonging to David Clark and  
 others and hath such marks and form as the above  
 plat represents. This land has been granted and this  
 survey now made is for the purpose of obtaining  
 a new Grant surveyed 17 July 1848

Josiah Ballinger  
 Joseph Lantry  
 James W. Dickson  
 Recorder 3 April 1848