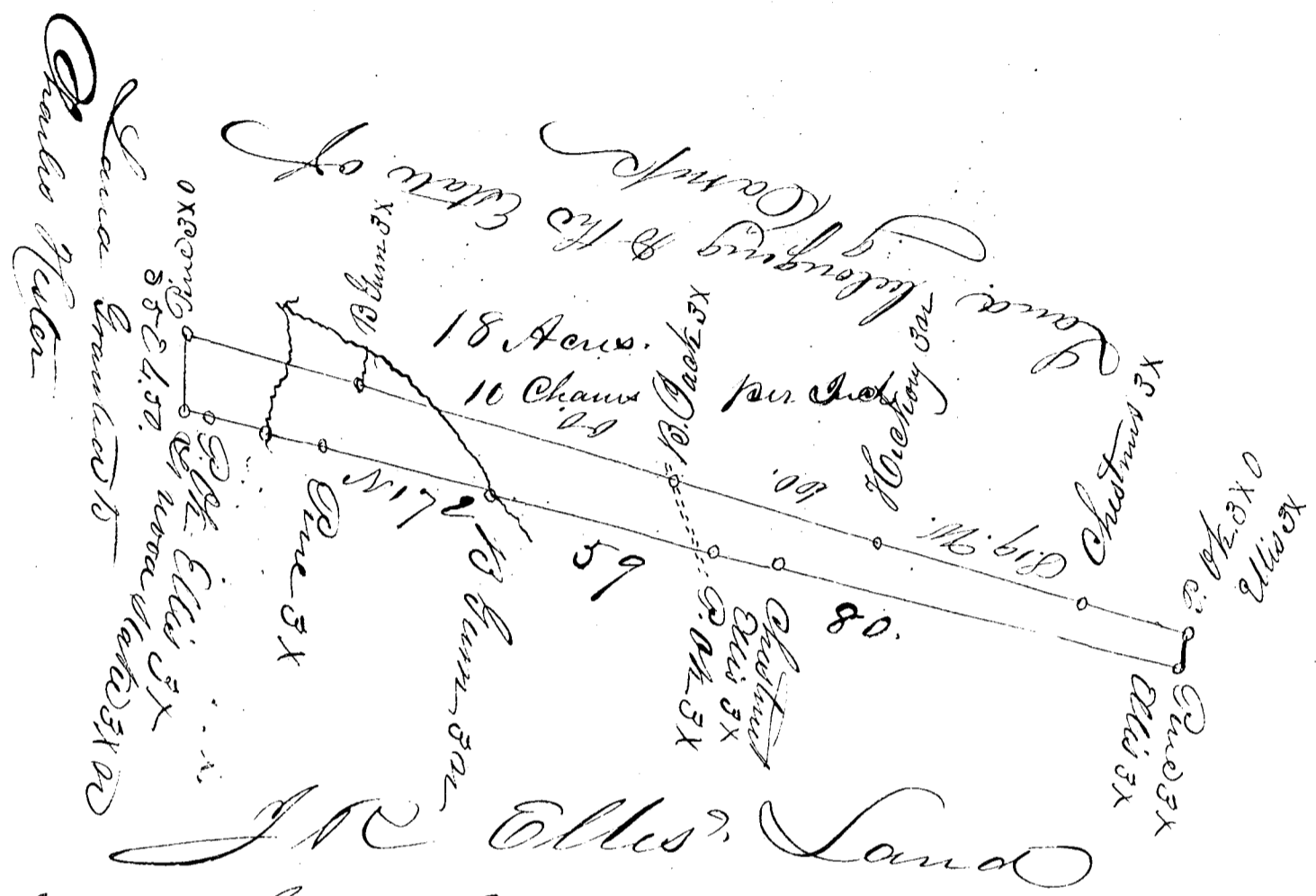


Margaret Camps. 159  
 Plat. 18 Acus.



Pursuant to a warrant from  
 J B Tolleson Esq. Commissioner of Location in the District  
 of Spauldenburgh dated the 31<sup>st</sup> day of December 1849  
 I have admeasured and laid out unto Margaret Camps  
 a tract of Land containing Eighteen Acus. Situated in  
 the said district on the branches of Coles Creek fork  
 of Thickety Waters of Broad River bounded by a line  
 running N 17 E. belonging to J R Ellis & S 17 E. by  
 land granted to Joseph Camp & by a line running  
 S 85 E. by land granted to Charles Hester and both such  
 four and marks as the above plat represents  
 Surveyed the 1<sup>st</sup> day of January 1850.

Received this 7<sup>th</sup> day of Jan'y 1850

J Quinn Camps  
 Deputy Surveyor