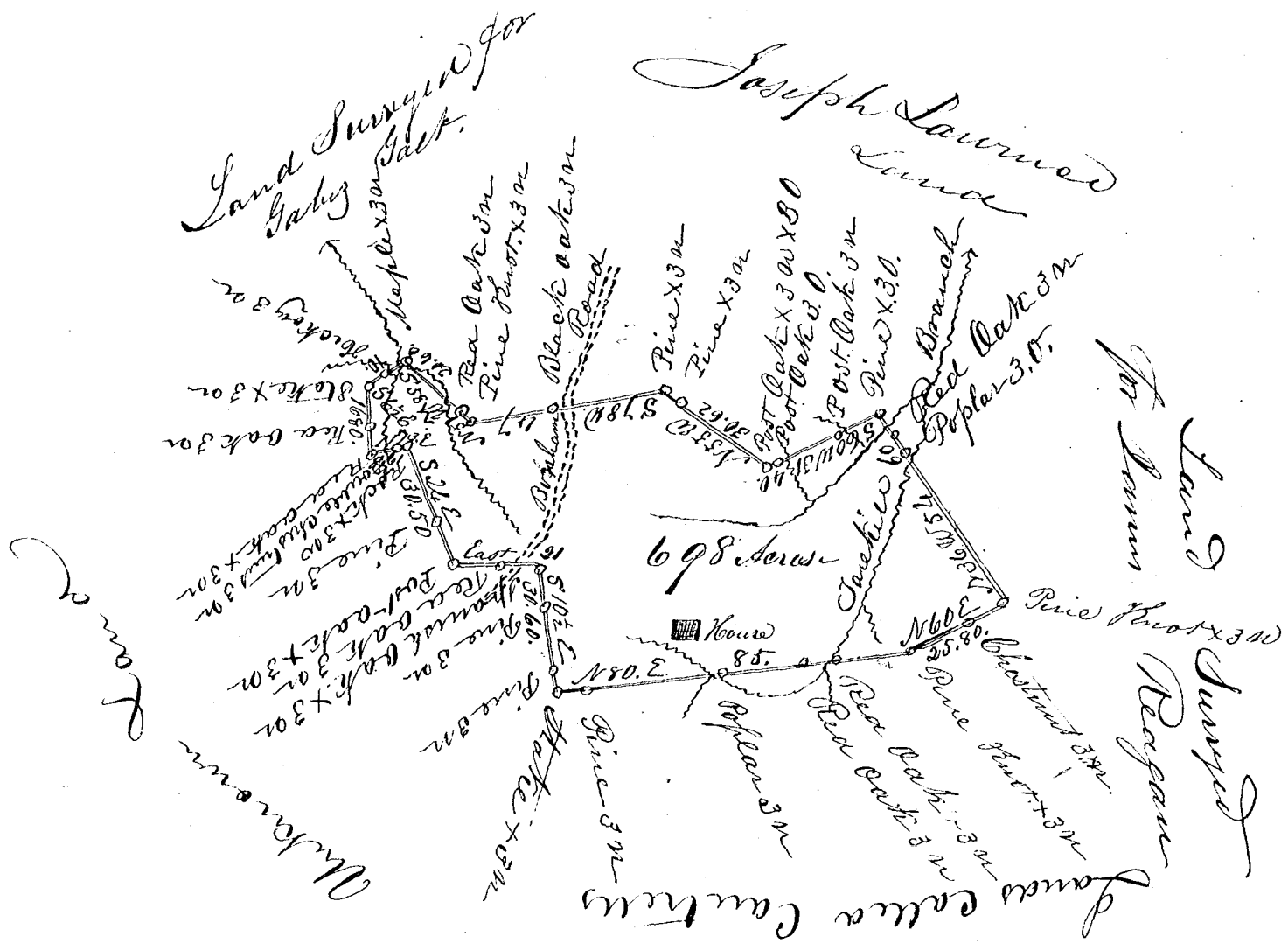


L. D. Westminsterlands
Plat. 698 Acres

1110



Joseph Lawrence and Lafayette Hampton Chaw Campuses -
Land down by a scale of forty Chains to an Inch

South Carolina

Pursuant to a warrant from J B Johnson
Commissioner of Location in the district of Spartanburgh dated
the 15th day of January 1850. I have admeasured & laid
out unto L D Westminsterland a Tract of Land containing
698 Acres Situated in the said district on branches of
Molloy's Creek waters of South Pacolet River bounded on
the N by G. Galt's and J. Lawrence Land on the E by
James Reagan's Land on the S. by lands called Cantrells
and the W by Unknown Lands, and hath such form
and marks, as the above plat. represents
Surveyed the 25 day of January 1850.

John B Davis
Deputy Surveyor

Witnessed this 29 July 1850.