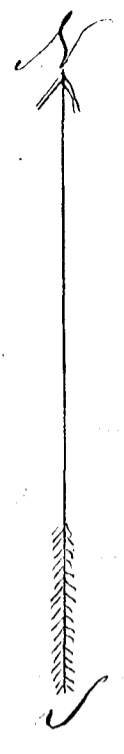
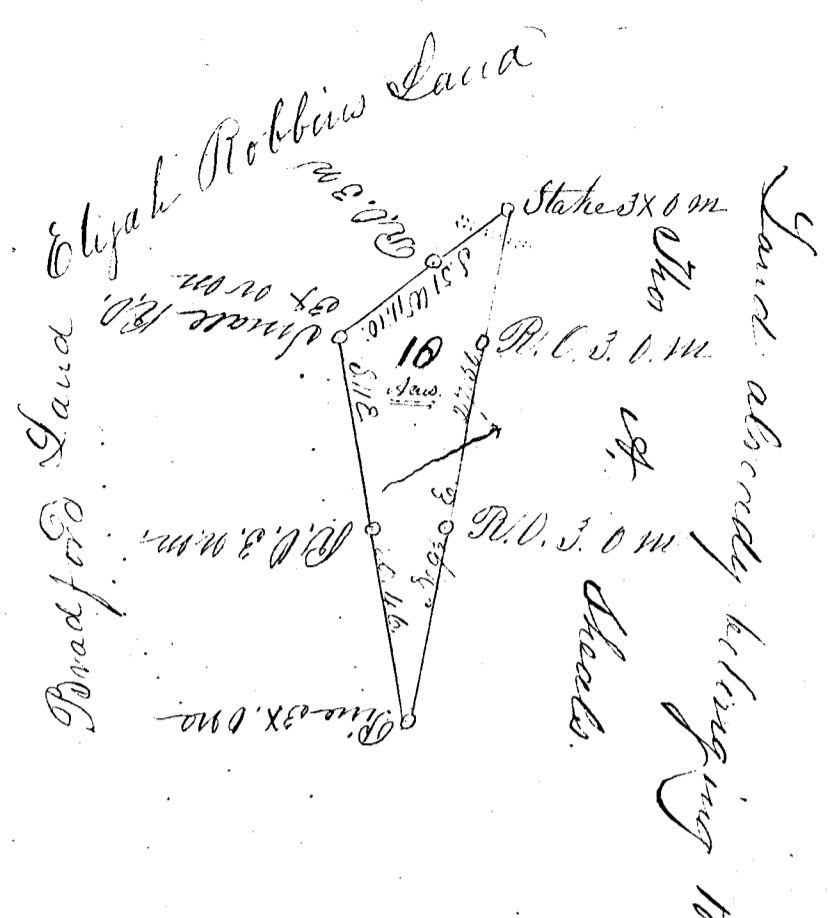


Thomas A Sheals. 22
Platt 870 Acres. 33



Laid out by a scale of Ten Chains, to an Inch

South Carolina

Pursuant to a warrant from J. B. Johnson Comr
 - in-charge of Location in the district of Spartanburgh dated
 the fourth day of November 1830 I have admeasured and
 laid out unto Thomas A Sheals a tract of land containing
 Ten Acs situated in the said district on a branch of
 Buck Creek water of Pickett River bounded by lands belong-
 -ing to said Sheals Bradford & Elyah Robbins and hath
 such form & marks as the above plat represents

Surveyed the third day of January 1831

Thomas A Sheals =
 William Sheals = C. C.

Elias Johnson
 Deputy Surveyor

Recorded the 5 day of January 1831