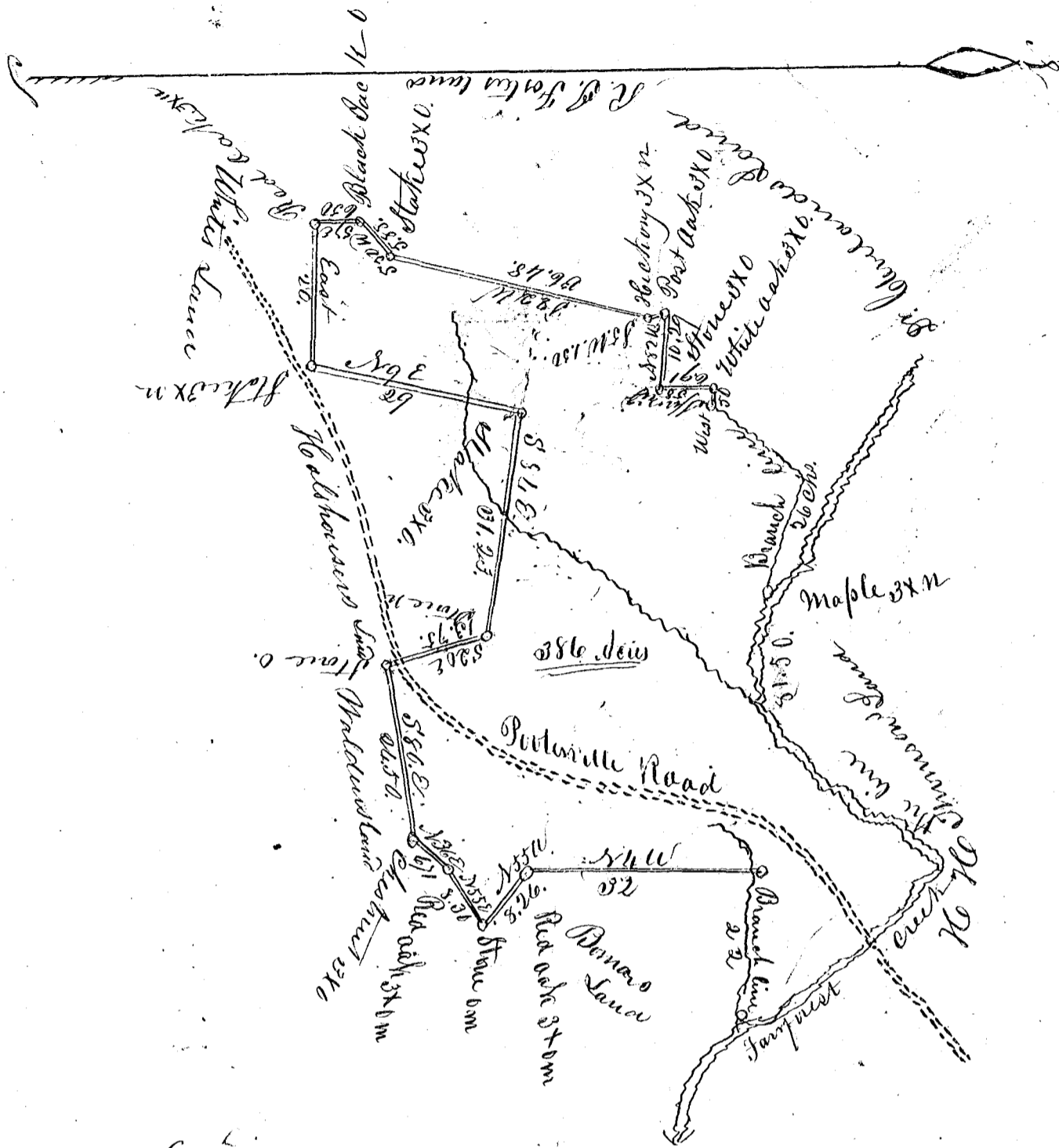


H. H. Thomson



Laid down by a Scale of Twenty Chains to an Inch
 South Carolina

Pursuant to warrant from J. B. Hollison
 Commissioner of Location in the district of Spartanburgh dated
 the 24th day of January 1851 I have admeasured and laid out
 unto H. H. Thomson a tract of land containing Three Hundred & Eighty
 Six acres situated in the said district on Starburst Creek waters
 of Tyger River & on both sides of the road leading from Spartanburgh
 Court House to Potterville bounded by a line running S. W. and
 S. E. by lands of R. J. Foster & lines running East & S. E. by Whites
 land and by lines running N. E. & S. E. by Houlshousen's land
 and lines running S. E. & N. E. by Walden's land & by lines running
 N. W. & a branch by John Bonar's land & on the Creek by
 H. H. Thomson land & by a branch & lines running S. W. & N. W.
 by Dr. Cleveland's land & hath such form & marks as the
 above plat represents, the above plat of land was formerly granted
 in a former grant & this survey was made to obtain a new
 grant, surveyed the 27 day of January 1851

Calvin Sellers
 Emanuel Sellers 3 l.c.

John Epton D. S.

Recorded the 1 July 1851