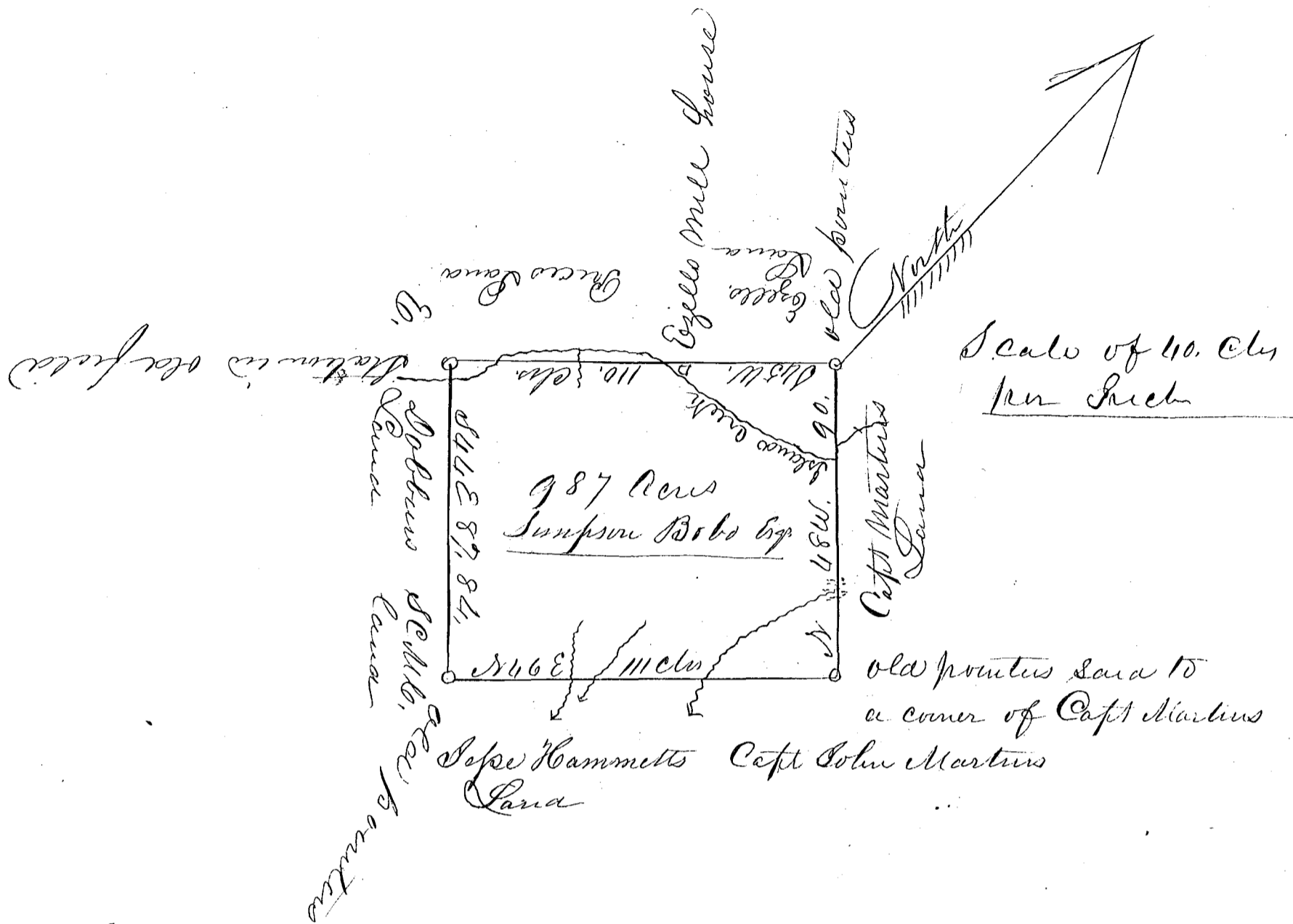


187

Simpson Bobo  
plat



South Carolina

Pursuant to a warrant from J. B. Tolleson  
 Commissioner of location in the District of Spartanburgh  
 dated the 19 May 1837 I have admeasured and laid  
 out to Simpson Bobo Esq, a tract of land containing  
 of nine hundred & Eighty seven acres, Situated in said  
 District & on Island Creek & on the head branches of  
 the holy waters of Pacolet River bounded by lands of Ezekiel  
 & Price on the N.W, and by lands of Ezekiel Dobbin  
 and the S.C. Manufacturing Company on the S.E, and  
 by lands of Sepe Hammett, and Capt John Martin on  
 the S.E, and by lands of Capt John Martin & others  
 on the N.E, & hath such form and bounds, & marks  
 as the above plat represents, this 20<sup>th</sup> of May 1837

Recd 21 May 1837

W. H. Kears  
Deputy Surveyor