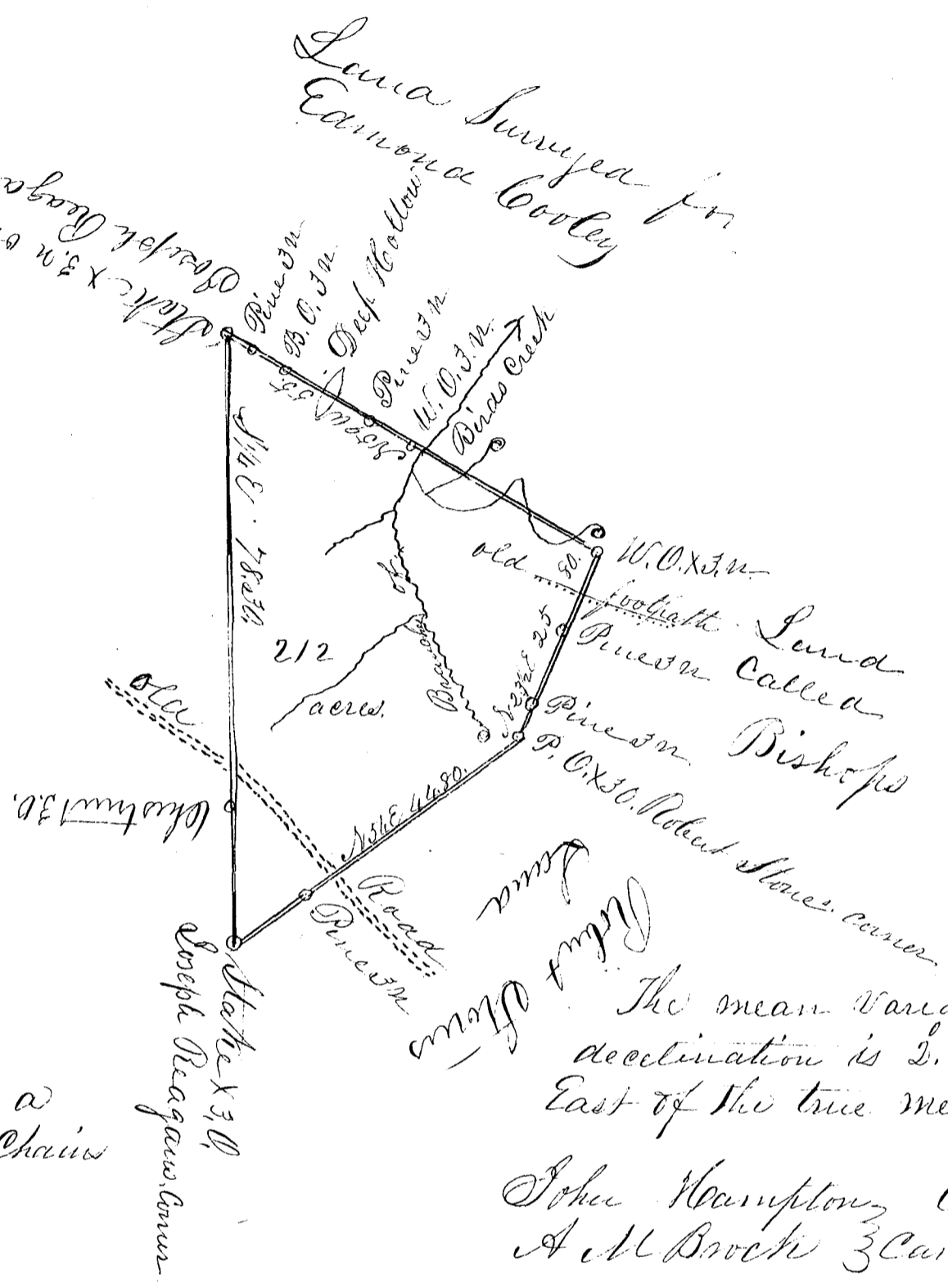


Samuel Bullington Esq. 190
 Plat 212 Acres

Land Surveyed for
 James Sharp on the
 17th of March 1743, now
 surveyed by Joseph Reagan



Laid down by a
 Scale of twenty Chains
 to an Inch

The mean variation in
 declination is 2.39
 East of the true meridian
 John Hampton Chain
 A.M. Brock 3 Chains.

South Carolina

Pursuant to a warrant from J.B. Tolson
 Commissioner of Location in the district of Spartanburg dated
 the 16th day of June 1831, I have admeasured and laid out
 unto Samuel Bullington Esq. a Tract of land containing
 212 acres situated in the said district on Branches of Bidas
 Creek waters of South Paolet River bounded on the N. E. by E.
 Cooley's land on the East by lands called Bishops on the S. E.
 by Robert Stone's land and on the West by Joseph Reagan's land
 and hath such form and shape as the above plat represents
 I surveyed the 12th day of July 1831. John B. Davis

Measura the 5 August 1831

Deputy Surveyor