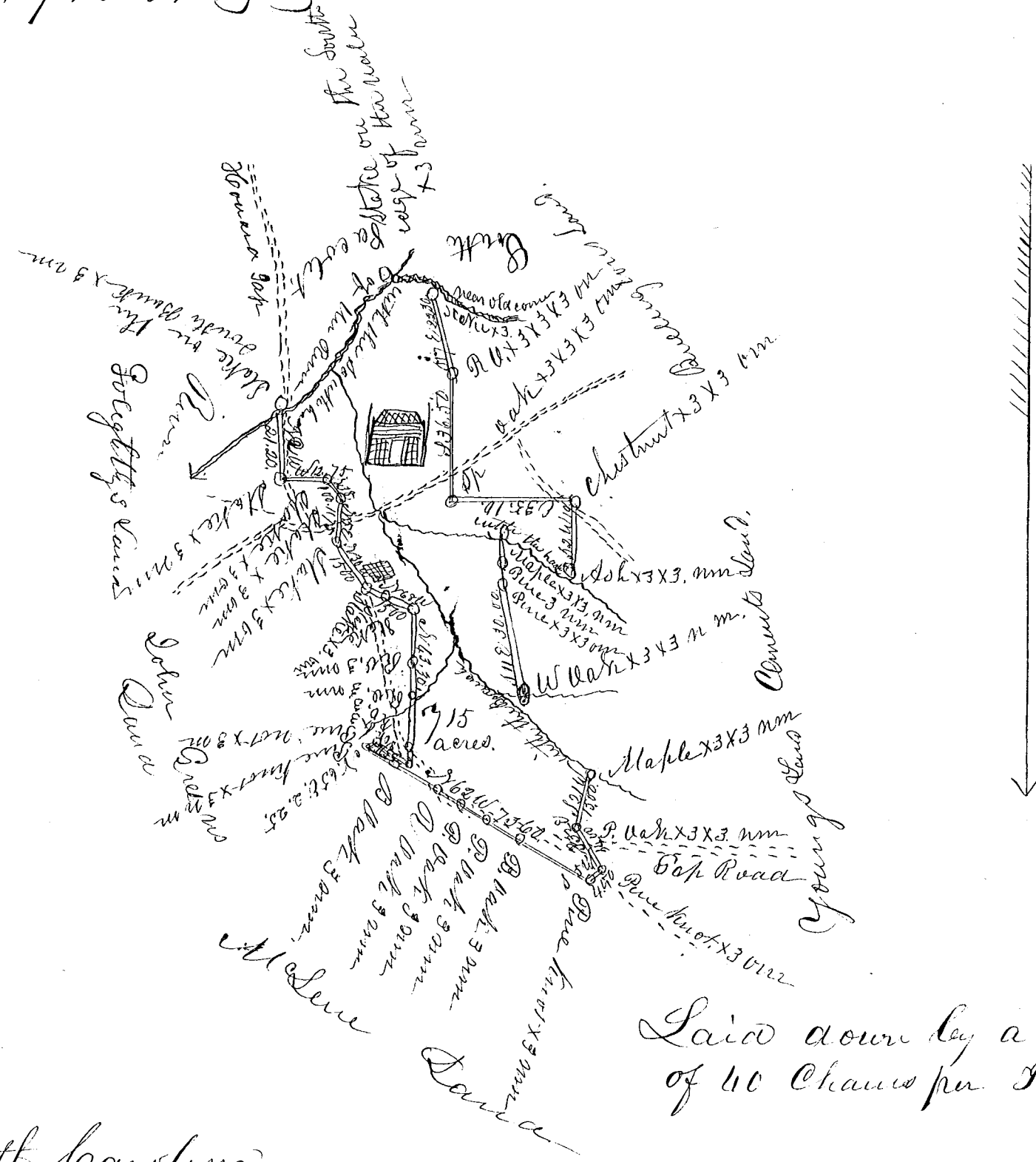


William Robbs,
Platt, 715 Acers

194



Laid down by a scale
of 40 Chains per Inch

South Carolina

Pursuant to a warrant from J B Tolson Commissioner of Location in the district of Spartanburgh dated the twenty first day of August 1837. I have admeasured & laid out unto William Robbs, a tract of land containing seven hundred & fifteen acres situated in the said district on Small branch and South Pacolet River bounded N.E. by Soligetti's land S.W. and N. by John Green's Land N.W. by McInnes land S.W. by Springs. S.E. by M. G. Belmonts land E. & S. by Bullingtons land & Math's such farm and marked as the above plat Representy, Surveyd, the 19 day of Sept-1837
This land was formerly granted and this survey is for the purpose of obtaining a new Grant,

A. C. Hardin
Deputy Surveyor

Recorded 6. Oct-1837