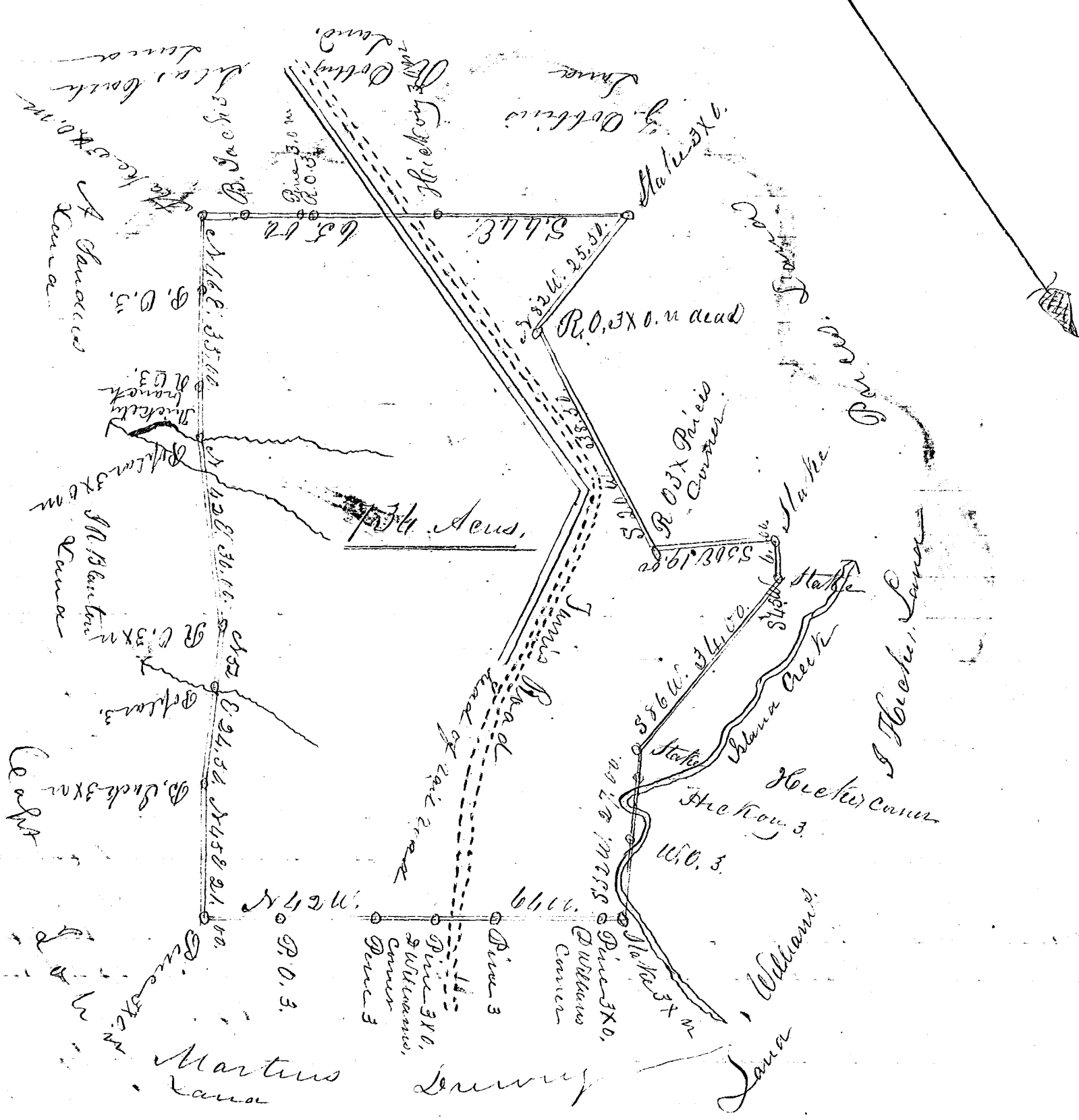


148

John McKeough  
Plat 734 Acre



Laid down by a scale of Seventy. Chains to an Inch

South Carolina

Pursuant to a warrant from S. B. Tolleson Commissioner in the district of Spartanburgh dated the 3 day of December 1831. I have admeasured and laid out to John McKeough a tract of land containing seven hundred and thirty four acres. Situated on Island Creek & head branches of the whole waters of Pacolet River bounded by lands of Williams Hicks & Price on the S.W. and by Dobbins & Selas Cash on the S.E. and Sanders Blanton & John Martin on the N.E. and hath such four and more marks as the above plat represents Surveyed the 5 day of December 1831.

John Epton D.S.

Recorded the 15 day of December 1831.