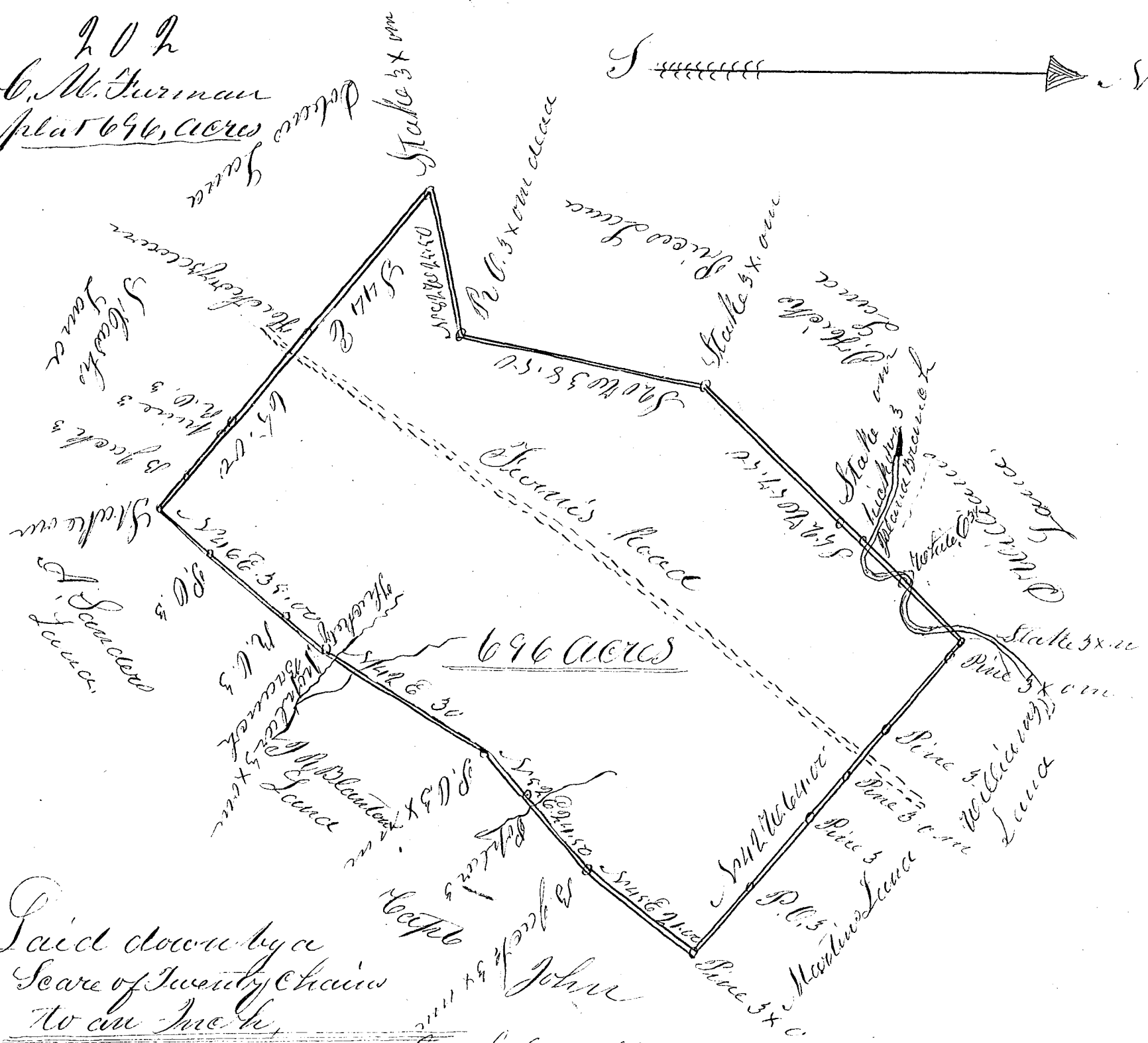
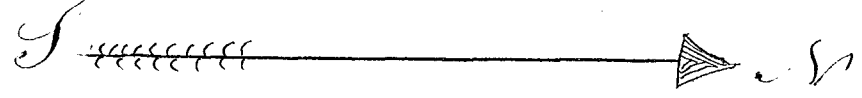


1852
 C. M. Furman
 plat 696, acres



Laid down by a
 Scale of Twenty Chains
 to an Inch.

South Carolina

Pursuant to a warrant given J. D. Tolson Commissioner of Locations in the District of Spartanburg, dated the 8th day of March 1852, I have measured and laid out unto Charles M. Furman a tract of Land containing Six Hundred and ninety six acres Situated in said District on Island Creek, and head branches of Thicket Creek waters of Pacolet River bound by lines running N.E. by lands of A. Sanders, J. N. Blanton and Capt John Martin N.W. and S.W. by lands owned by D. Williams, J. Hicks and J. & H. Price. S.E. by Dobins and Cashs Lands, and hath such form and marks as the above plat represents Surveyed the 9th day of March 1852.

John Epton D.S.

Recorded 9th day of March 1852,