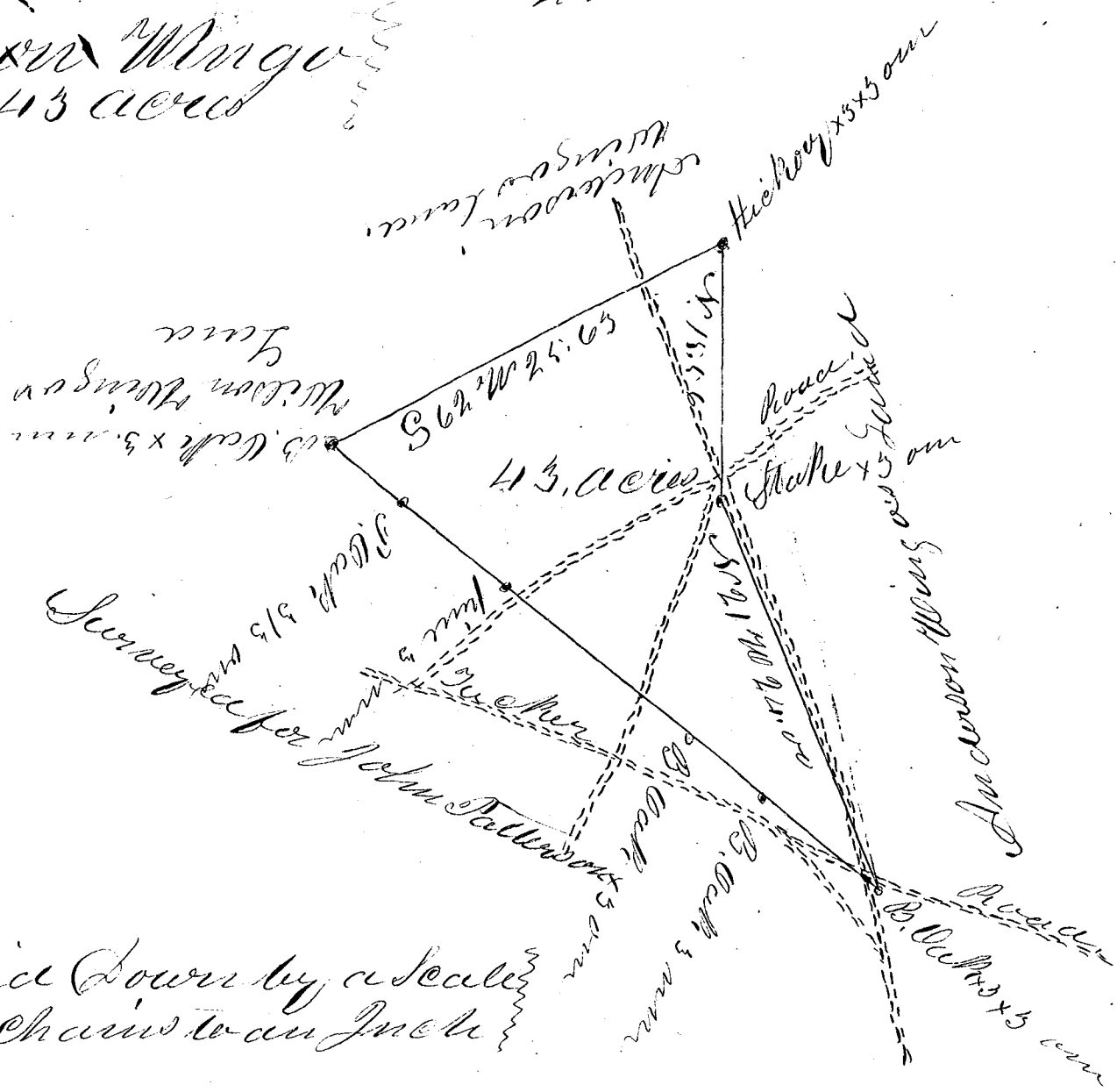


223

Wilson Wingo  
Plat. 43 acres



Laid down by a scale  
of 10 Chains to an Inch

South Carolina

Pursuant to a warrant from J. B. Tolson, Commissioner of Location, in the District of Spartanburg dated the 8th day of February 1853, I have measured and laid out unto Wilson Wingo a Tract of Land containing forty three acres, Situate in the said District on Crane's Branch waters of North Tyger River bounded by a line running S 62° W 25.63' by Wilson and Anderson Wingo S. E. by lands surveyed for John Patterson and hath such points and marked as the above plat represents.

Surveyed 10<sup>th</sup> day of March 1853.  
A. O. Hadden  
C. Surveyor

Recorded 12<sup>th</sup> March 1853. -