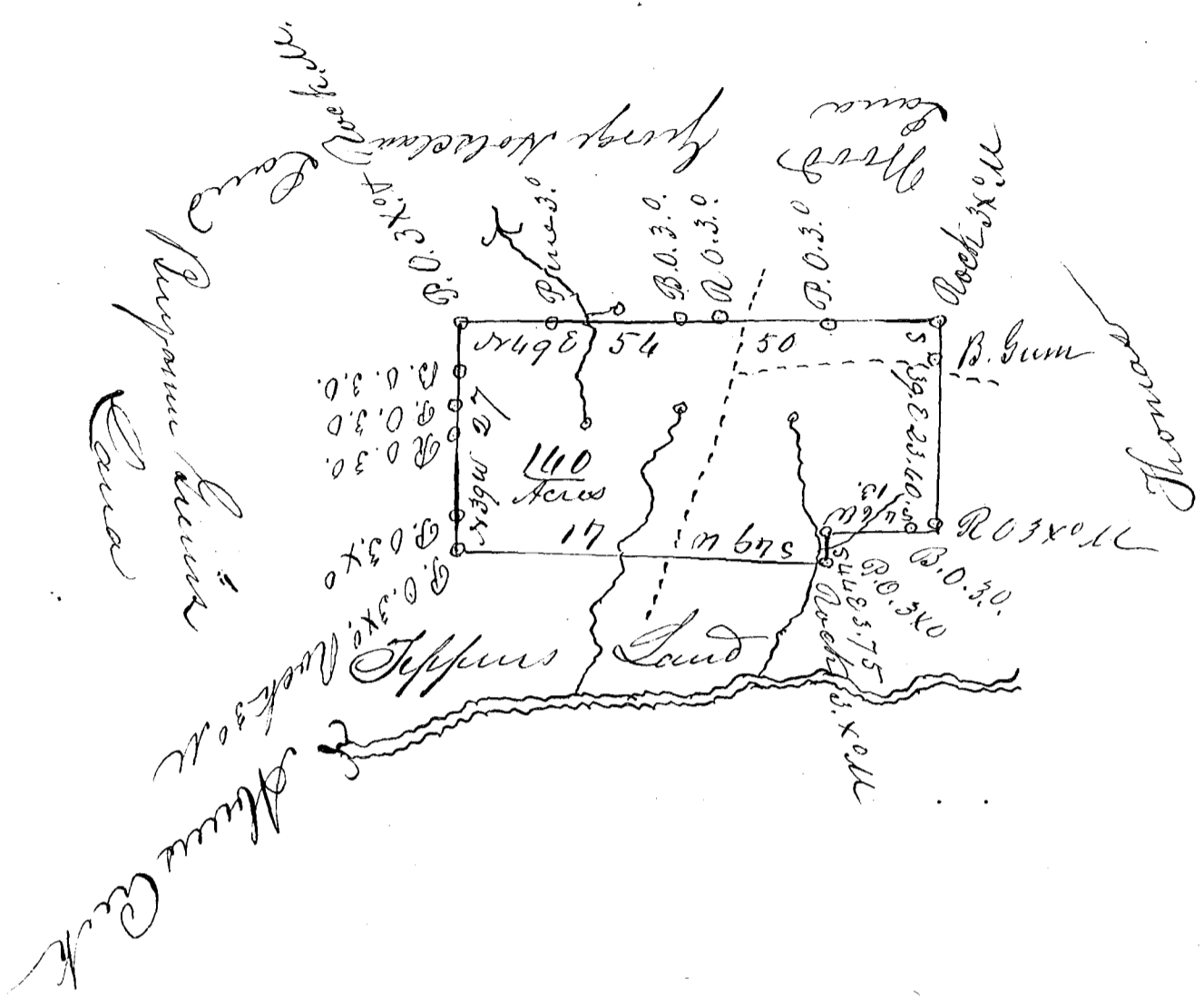


20 Chains per Inch



South Carolina

Pursuant to a warrant from J. B. Johnson Esq. Commissioner of Location in the district of Maulanburgh dated the 13 of April 1833 I have admeasured & laid out unto William Van Nych the administrator of the Estate of Samuel Marvick Dec'd, a tract of Land Situate in said district, on branches of Abner Creek of Enne River bounded on Puyamun Green — Tippins Land Thomas Wood & George Hollschaw, Land It being for the purpose of obtaining a new grant for part of a tract of Land originally granted and hadt such form shape & boundaries as the above plat represents Surveyed the 15. of April 1833

Thos J. Gammon
Supt Survey

Recorded 18. April 1833