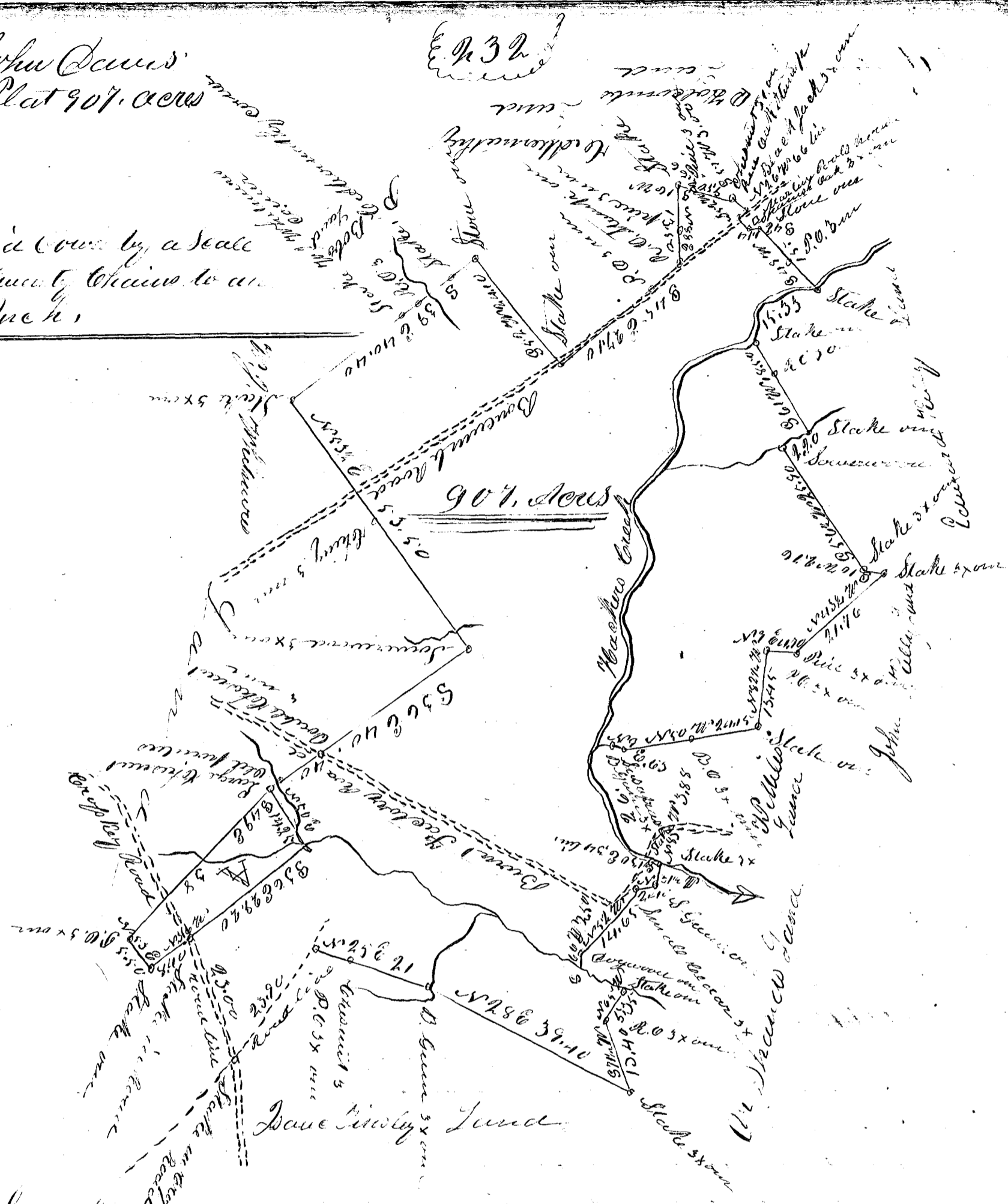


John Davis
Plat 907. acres

Laid out by a scale
of twenty chains to an
inch



South Carolina

Pursuant to a Warrant from J. B. Tolson. Commissioner of Location in the District of Spartanburg dated the 21st day of February 1853. I have measured and laid out unto John Davis a tract of Land containing nine hundred and seven acres situated in the said District on both side of Buckhorn Creek, Waters of Tyger River, it being part of several Grants previously granted, and the Survey now made is for the purpose of obtaining a new Grant. The square marked A represents twenty nine acres claimed by W. M. Whitman bounded on the North by lands of Dr. Shamus Smith, John Kelly and by Cleveland Kelly and on the West by Martin Poles & Holcomb, H. M. Tinsley and Anthony Bobo on the South by W. M. Whitman & Hiram Garbrough & on the East by Isaac Tinsley, and hath such four corner marks as the above Plat represents. Surveyed the 23rd day of February 1853.

John Tolson
C.S.

Measured 23rd of May 1853