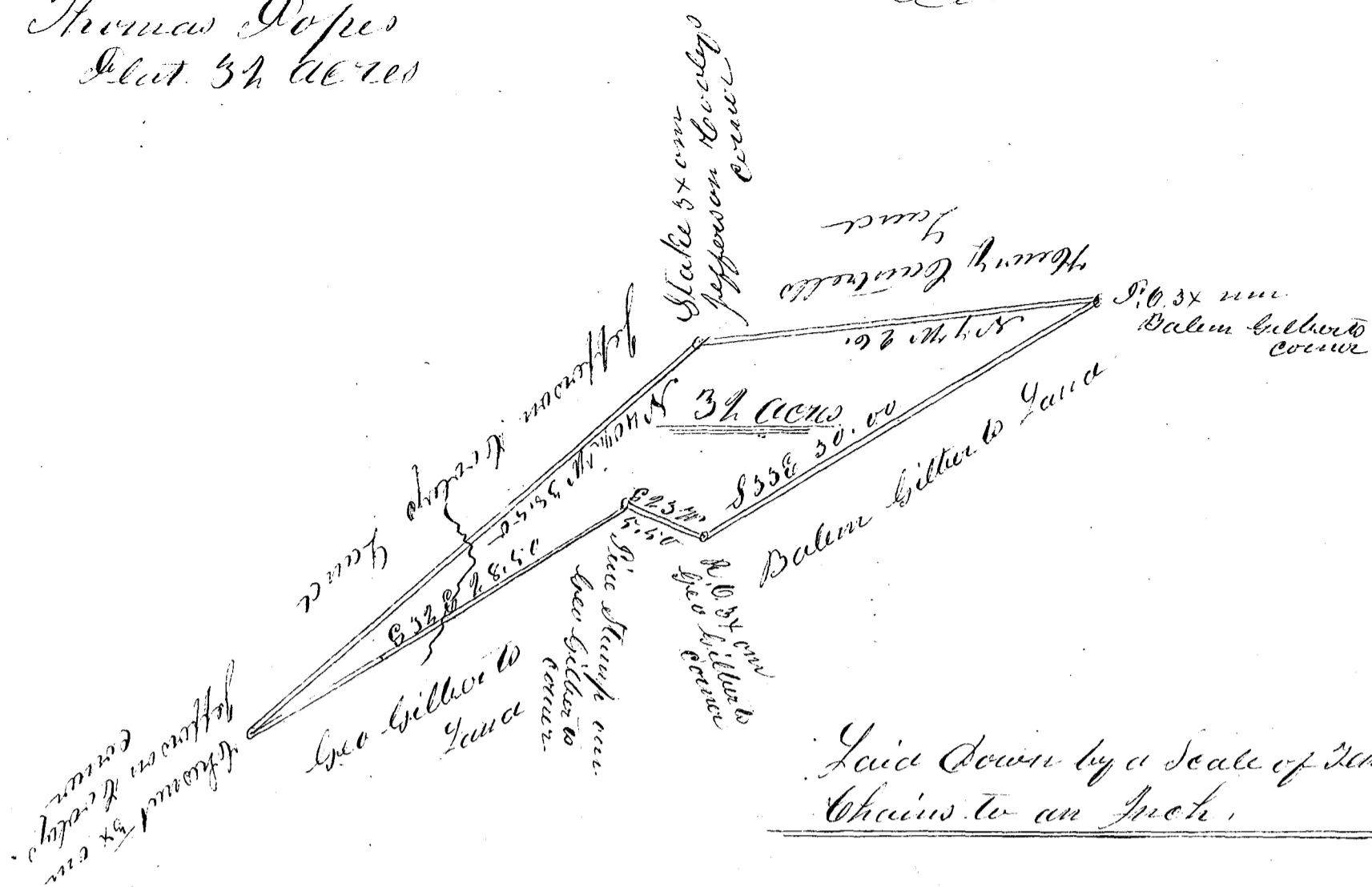


EP 35

Thomas Pope  
Plat. 32 acres



South Carolina,

Pursuant to a Warrant from J. B. Gallison Commissioner of Locations in the District of Spartanburg dated the 17<sup>th</sup> day of August 1853. I have admeasured and laid out unto Thomas Pope a Tract of Land containing Thirty two acres, situated in said District on a branch of Jacobet River, bounded by ~~land~~ lines running S. E. S 70<sup>th</sup> W. S. E. by lands owned by Geo. Gilbert and Balem Gilbert and lines running N. 7<sup>th</sup> W by lands owned by Henry Cantrell and Jefferson Cowley and hath such poles and marks as the above Plat represents. Surveyed the 13<sup>th</sup> day of August 1853.

John E. Pope  
S. S.

Recorded 19<sup>th</sup> Oct 1853.