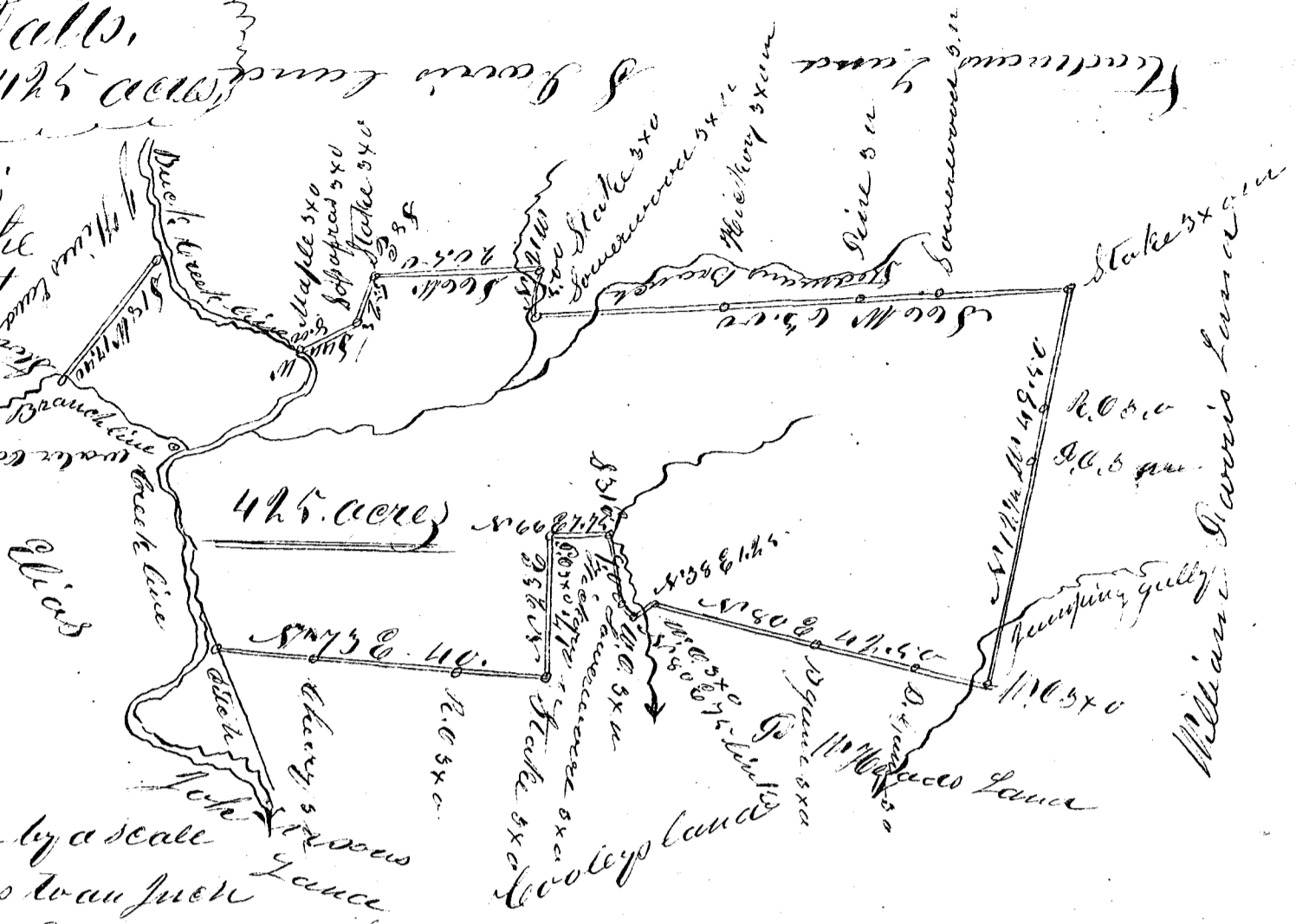


John Walls,
Plat 425 acres

This Plat is
incorrect the
correct Plat
is given
on Page
219,



Laid down by a scale
of 20 chains to an inch

The above Plat of land has been previously granted and this survey is made to obtain a new Plat,

South Carolina

Pursuant to a Warrant from J B Tolson

Commissioner of Land in the District of Columbia
dated the 25th day of January 1854. I have admeasured and
laid out unto John Walls a Tract of land containing four
hundred & twenty five acres, situated in said District on
both sides of Buck Creek of Peeble River waters of Broad
River bounded on the North and West by lands of J Garris
John Steadman & John Hines and on the South & East
by lands of Elias Johnson Tho J Cooley, Dell Head and
William Garris, and hath such form and marks as
the above Plat represents.

Surveyed the 28th day of January 1854

John Estlin, S.S.

Recorded the 6th Feb 1854

The above Plat was put in for Record incor-
rectly made, the correct Plat may be found
on Page 219.