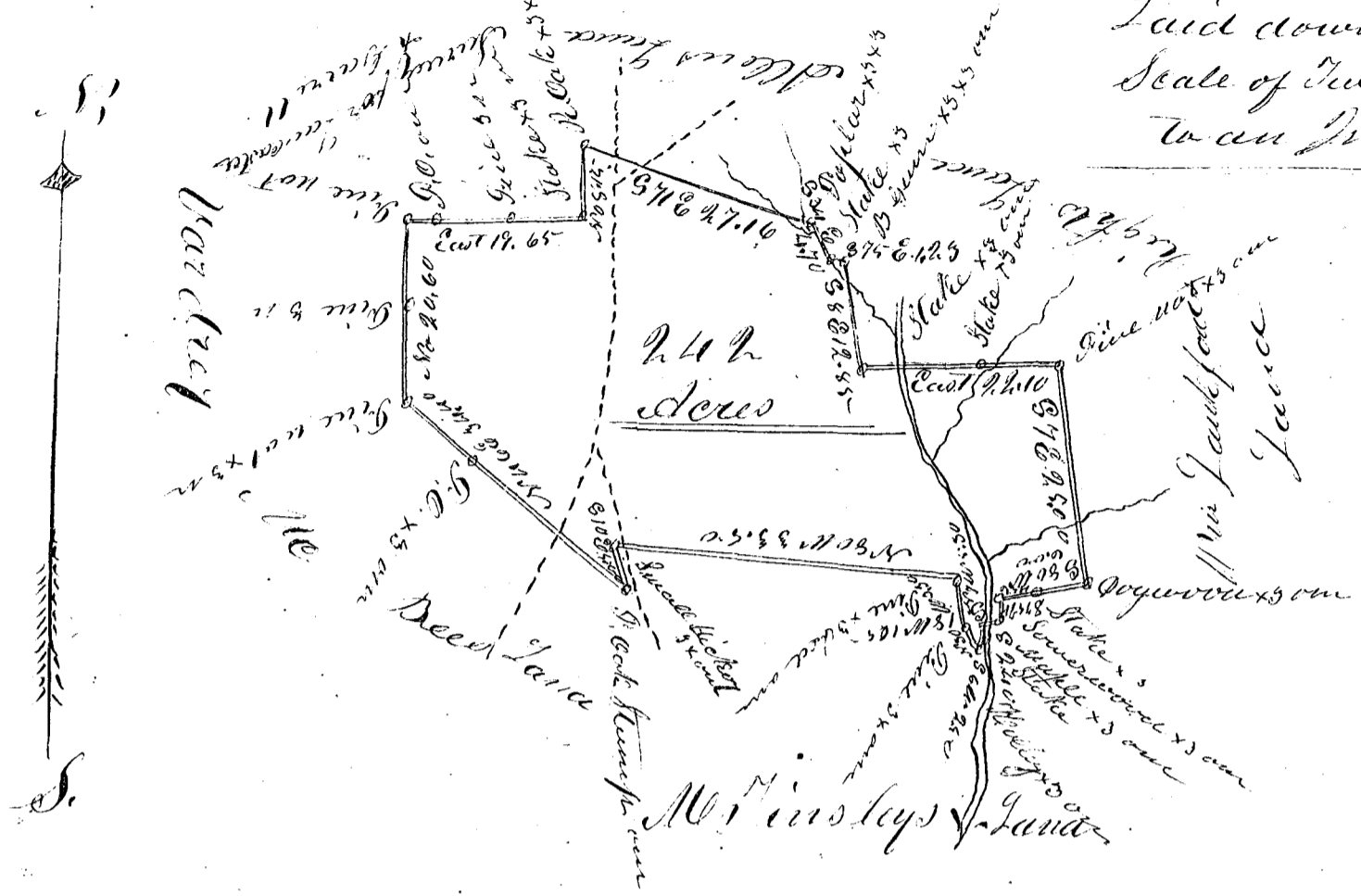


William Faulkner
Plat 242 acres

242

Laid down by a
Scale of Twenty Chains
to an Inch



South Carolina,

Pursuant to a Warrant from J. B. Hollison

Commissioner of Locations in the District of Spartanburg dated the sixth day of December 1853. I have admeasured and laid out unto William Faulkner a Tract of Land containing Two Hundred and Forty two Acres Situated in the said District on Wolf Swamp Creek, branch Water of Middle Tyger River, bounded by a line running S by William Faulkner, S. W. & N. W. by M. Minsley N. E. & S. by Mr McBees Land East by Lancaster & Garretts S. E. by Mr Allen Est by right, and hath such four corners marked as the above Plat represents. Surveyed the 10th day of December 1853.

A. C. Hadden }
Deputy Surveyor }

Recorded February 6th 1854