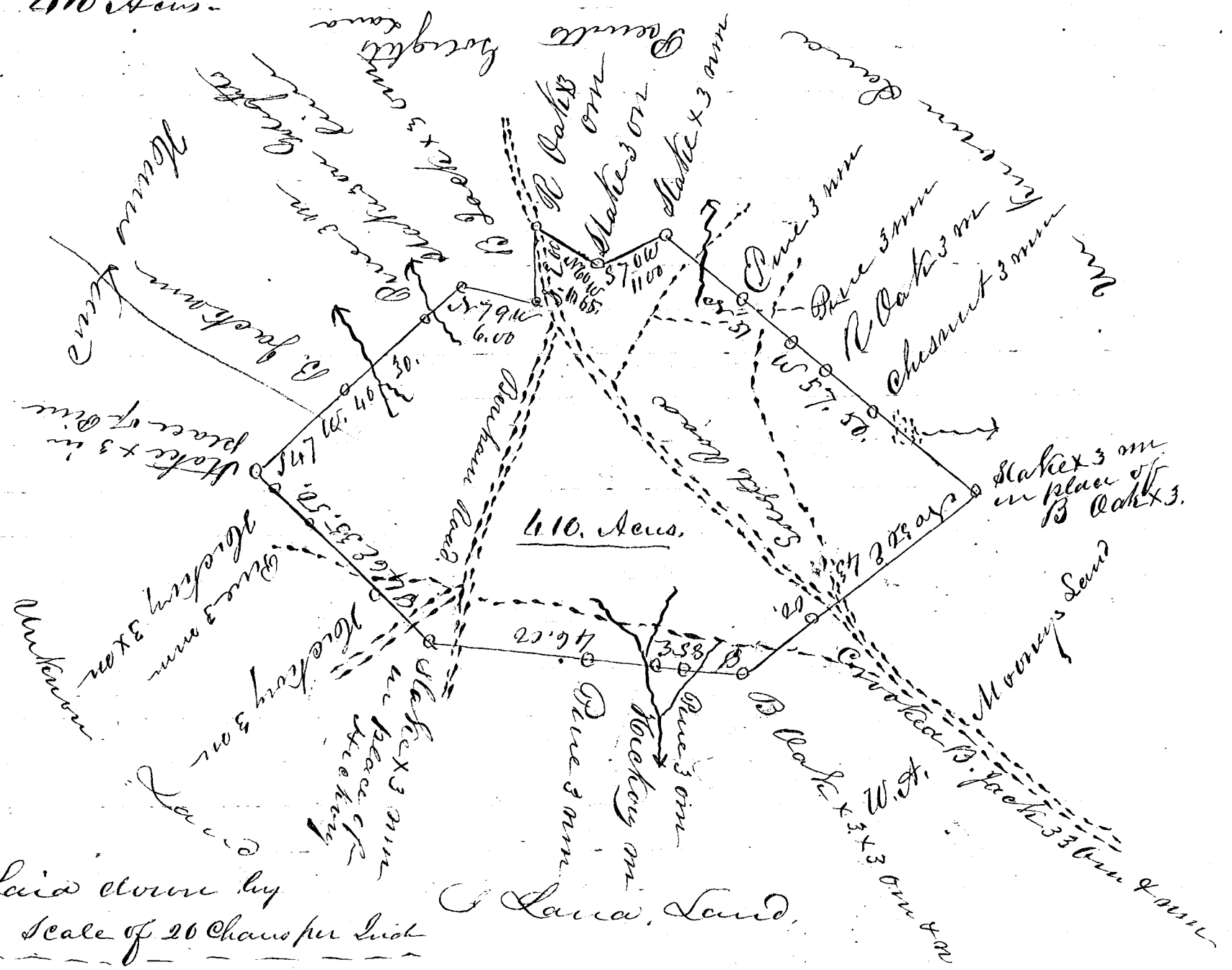


Dr. W. A. Moony 213  
410 Acs.



Laid down by  
a scale of 20 Chains per inch

J. L. Hardin

South Carolina

Pursuant to a warrant from J. B. Tolson  
Commissioner of Location in the district of Spartanburgh  
dated the 10<sup>th</sup> day of February 1834, I have admeasured and  
laid out unto Wm A Moony a tract of Land contain-  
ing Four Hundred & Ten acres, Situated in the said  
district on the long branch waters of South Pacolet  
River & small branches of North Syger River bounded  
by a line running S. E. by Jacob Land's & E by Wm  
A. Moony S. W. & N. W. by E. Prentiss S. & N. W. by  
Slightly land all other sides unknown & hath  
such form & marks as the above plat represents  
Surveyed the 13 day of February 1834

J. L. Hardin

The above plat is for the purpose of obtaining  
a new Grant.

Recorded 18 July 1834