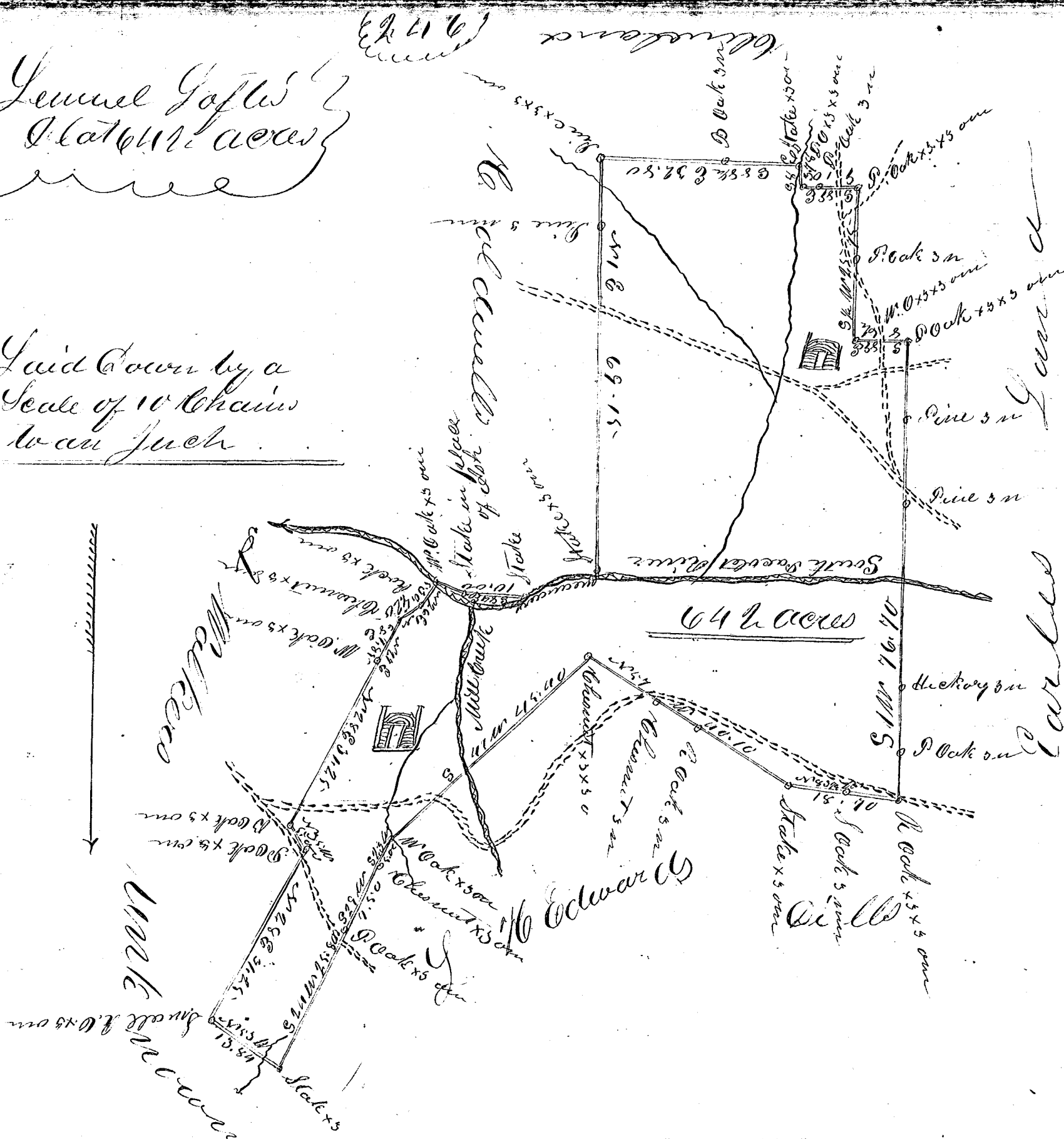


*General Goff's
Plat near
Cleveland*

*Laid down by a
Scale of 10 Chains
to an Inch.*



South Carolina

Pursuant to a Mandate from B. Bolleson, Commissioner of Locations in the District of Spartanburg, dated the 10th day of February 1854. I have admeasured and laid out unto General Goff a tract of Land containing Sixteen acres and forty two acres situated in the said District on South Sackett River bounded by a line running N.E. by Coldwell N.E. by A. Walters, N.W. by J. H. Edwards N.W. by Mills, S.W. by Parks, S.E. by Cleveland all other sides unknown, and hath such your and marked as the above Plat represents.

Surveyed the 15th day of March 1854.

A. C. Hadden C.S.

N.B. The above Plat is for the purpose of obtaining a new Grant.
A. C. Hadden

Recorded 20th March 1854