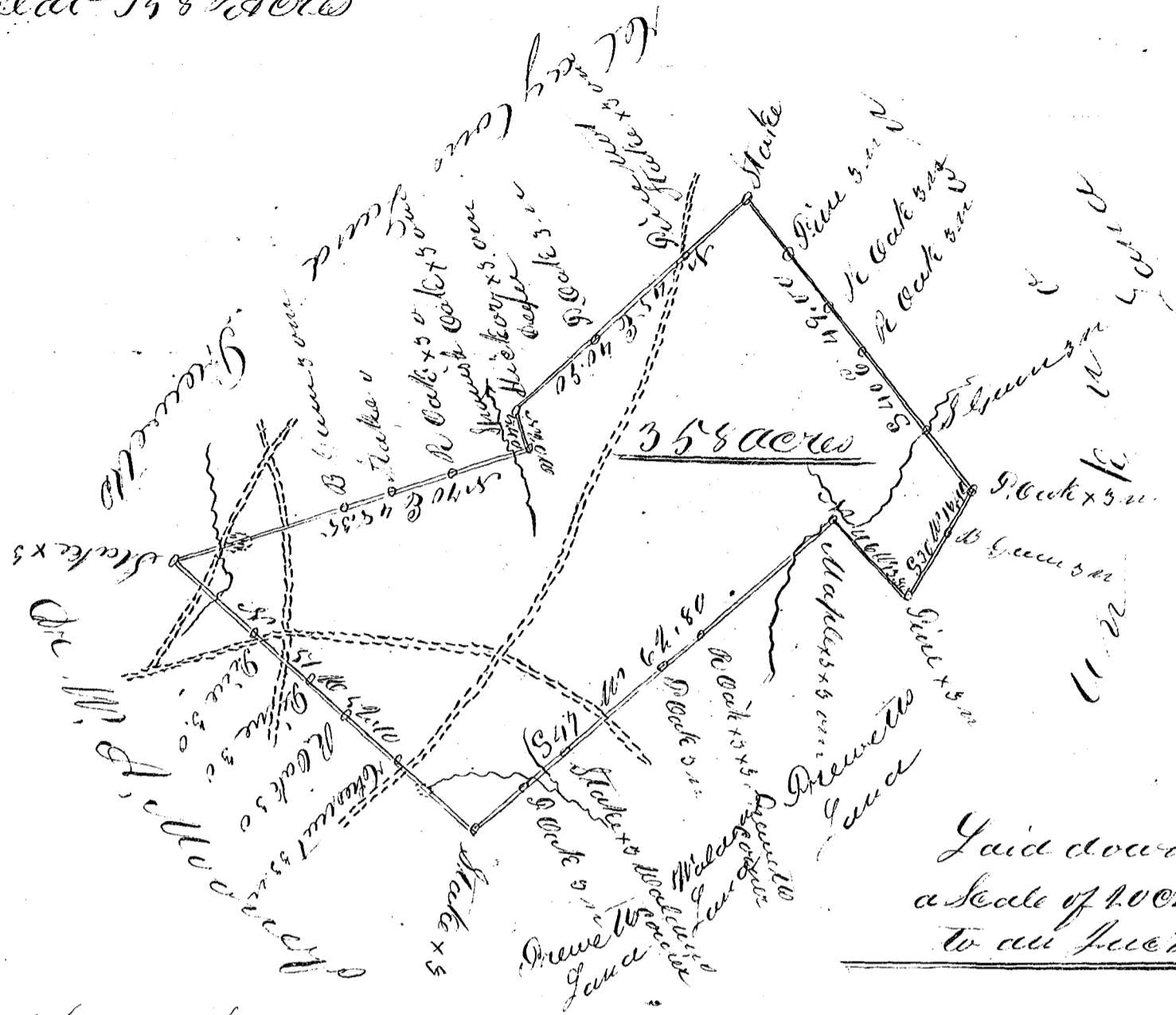


9.117

Josiah Clayton
Plat 358 Acres



Laid down by
a scale of 40 chains
to an inch

South Carolina

Pursuant to a Mandate
from His Excellency Commissioner of Locations in the
District of Spartanburg dated the 6th day of March 1854.
I have advanced and laid out unto Josiah Clayton
a tract of Land containing three hundred & fifty eight
acres situate in the said District on Wolf Swamp branch
of the waters of Middle River bounded by a line run-
ning N.W. by land surveyed for M. A. Moorey, S.W. by
D. Bennett, J. Malden and R. Bennett. N.E. by Clayton
and E. Bennett all other sides unknown, and hath set
form and marked as the above Plat represents.
Surveyed the 7th day of March 1854.

J. C. Gardner
Deputy Surveyor

Recorded 20th March 1854