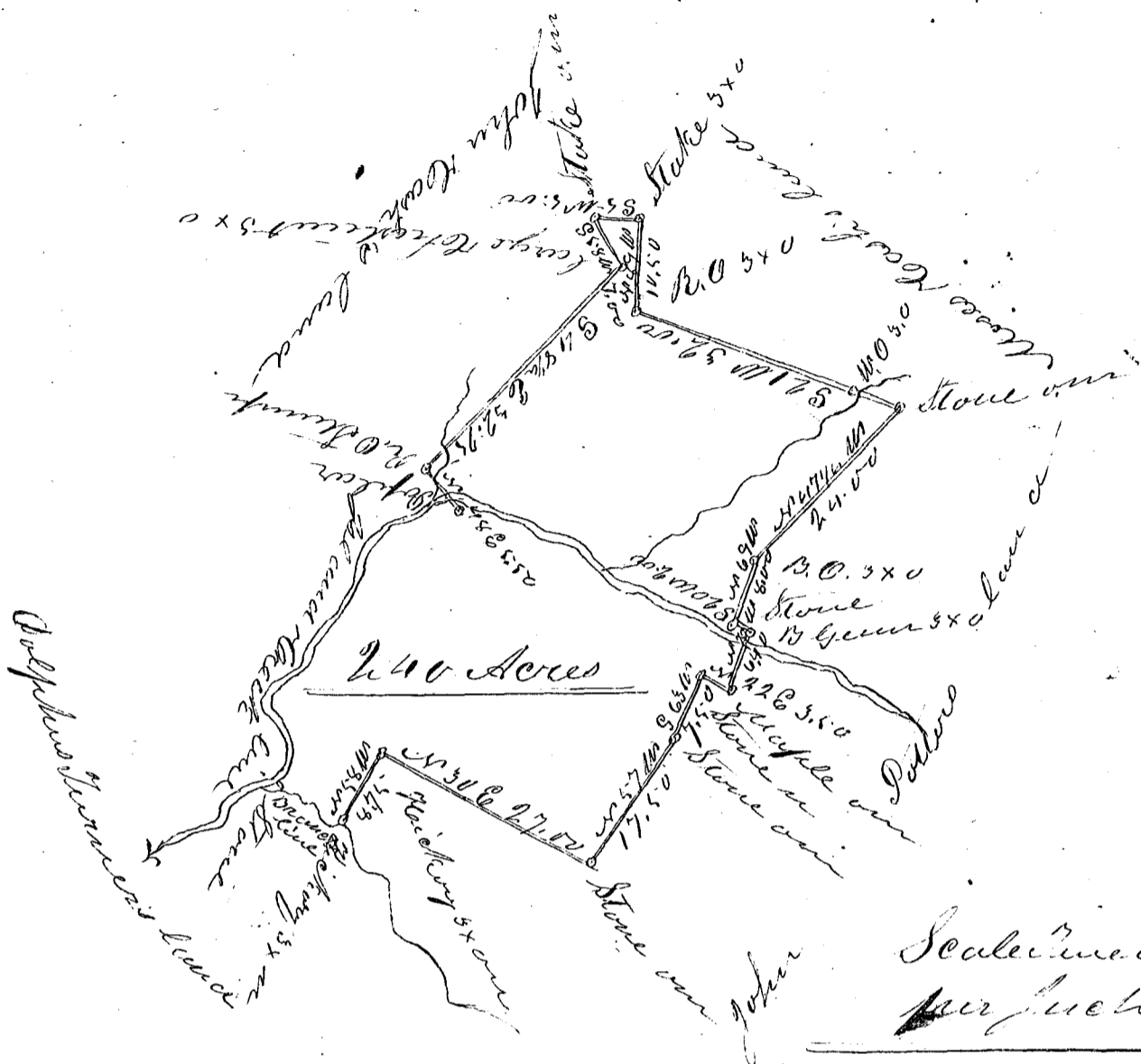


Hilden Turner
Plat of 40 acres



Scale in feet
Chains
per inch

South Carolina

Pursuant to a warrant from J. B. Tolson
Commissioner of Locations in the District of Spartaburg dated
the 12th day of April 1854. I have admeasured and laid out
unto Hilden Turner a tract of land containing 40 acres
and a forty acres situated in said District on both sides
of Blanch Creek, waters of Popolet River, bounded on the
North by lands owned by John Potter, on the West by Moses Cash
on the South by John Cash & Dolphus Turner, and both
such form and marks as the above Plat represents.
The above lands having been previously granted, this
survey is now made to obtain a new grant
Surveyed 13th day of April 1854.

John Epton
D.S.

Recorded 23rd day of April 1854