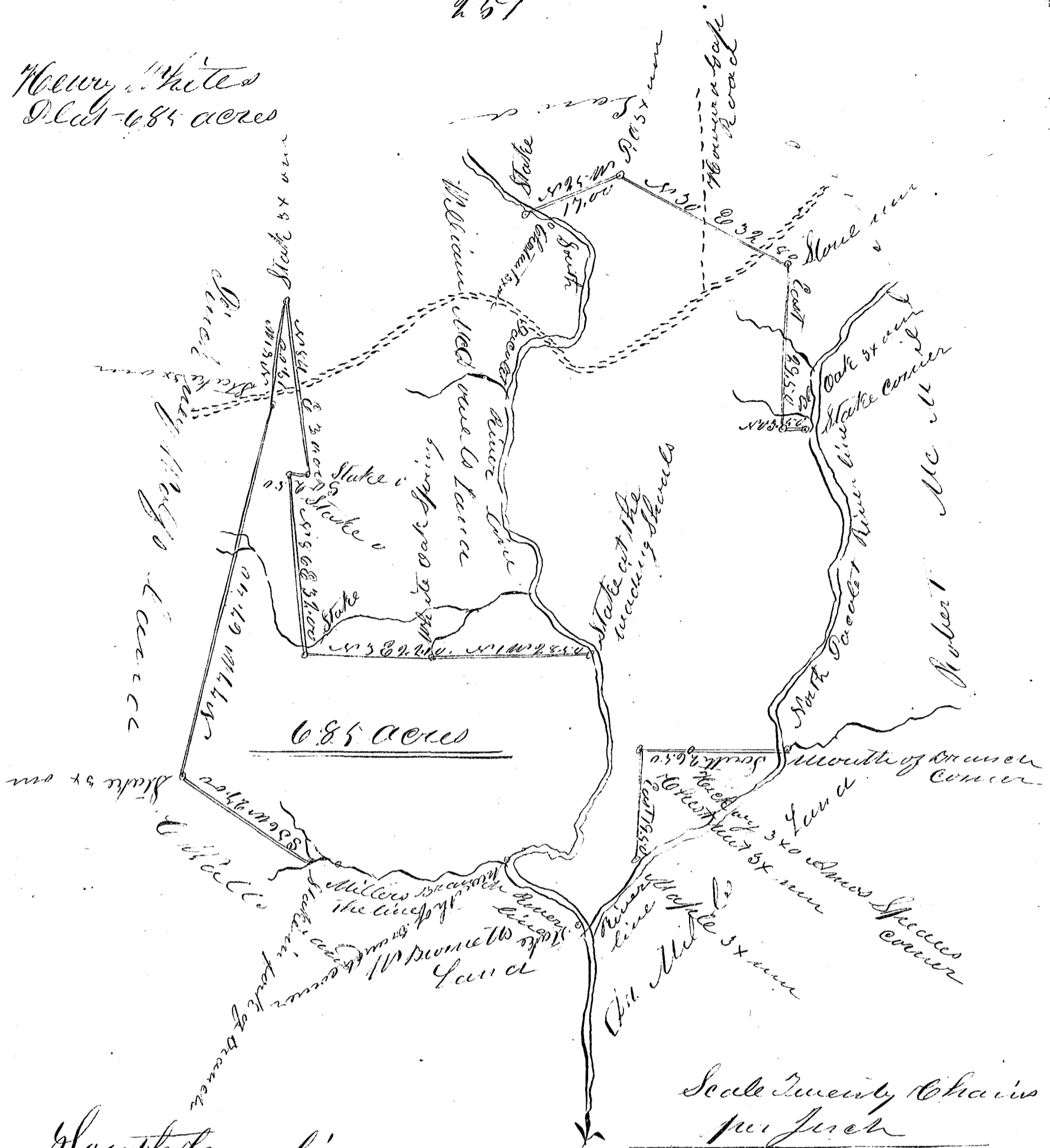


Henry White  
Plat 685 acres



South Carolina

In pursuance to a Warrant from  
 Mr Tolson Commissioner of Locations in the District  
 of Spartanburg dated the 18<sup>th</sup> day of April 1854 I have  
 measured and laid out unto Henry White Esq. a  
 Tract of Land containing Six hundred & Eighty five  
 Acres situated in said District on the South side of  
 North Oarlet River, and on both sides of South Oarlet  
 River bounded by lands of Pinckney Wolf Clark, Mc  
 Woods on Bennett, Ch Mills, Robert McMillian &  
 William McDowell, it having been parts of several tra  
 - cts previously granted, this Survey is now made to  
 obtain a new Grant, the same having such form  
 and marks as the above Plat represents.

Surveyed the 20<sup>th</sup> day of April 1854.

John Epton  
C.S.

Recorded 23<sup>rd</sup> April 1854

(Handwritten signature)