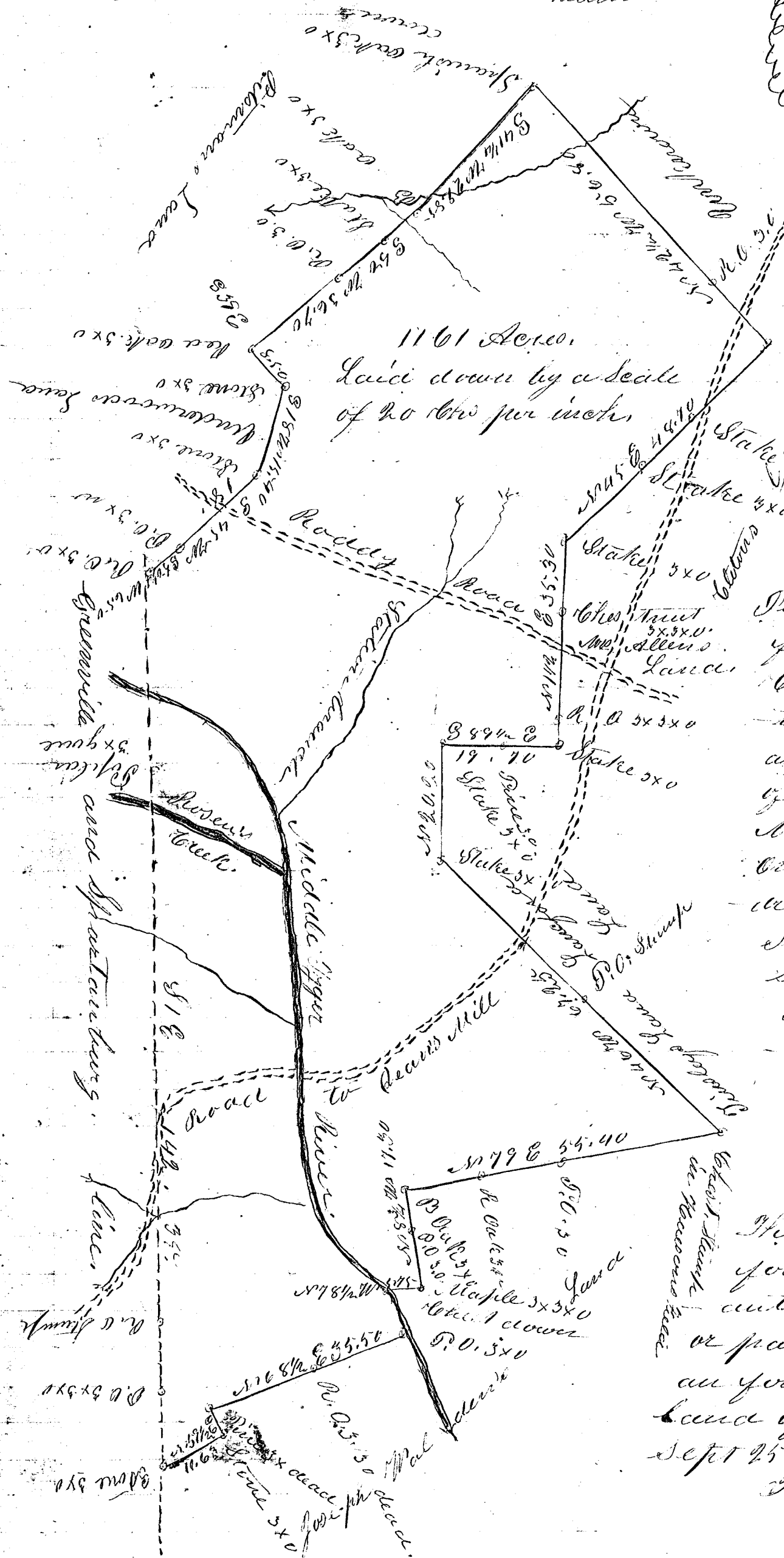


253

E. P. McPhee's
Plat. 1161 Acre.



1161 Acre.
Laid down by a scale
of 20 Chs per inch.

South Carolina
Spartanburg Dist
Pursuant to a Warrant
given J. D. Colson
Commissioner of Loca-
tions I have surveyed
and laid out a tract
of Land for Henry
McPhee containing
one thousand one hun-
-dred and sixty one Acre
situate and being in
Spartanburg District
on both sides of Mid-
dle Pyper River, and
with such marks
Shapes and Num-
-bers as the within
plat represents.
This Survey is made
for the purpose re-gr-
-anting several tracts
or parts of grants in all
an for granting vacant
land of any Surveyor
Sept 25th 1854.
James T. Dickson
Clerk

Joseph Walden
Allen Honeycutt } C. C.

Recorded 18 November 1854.