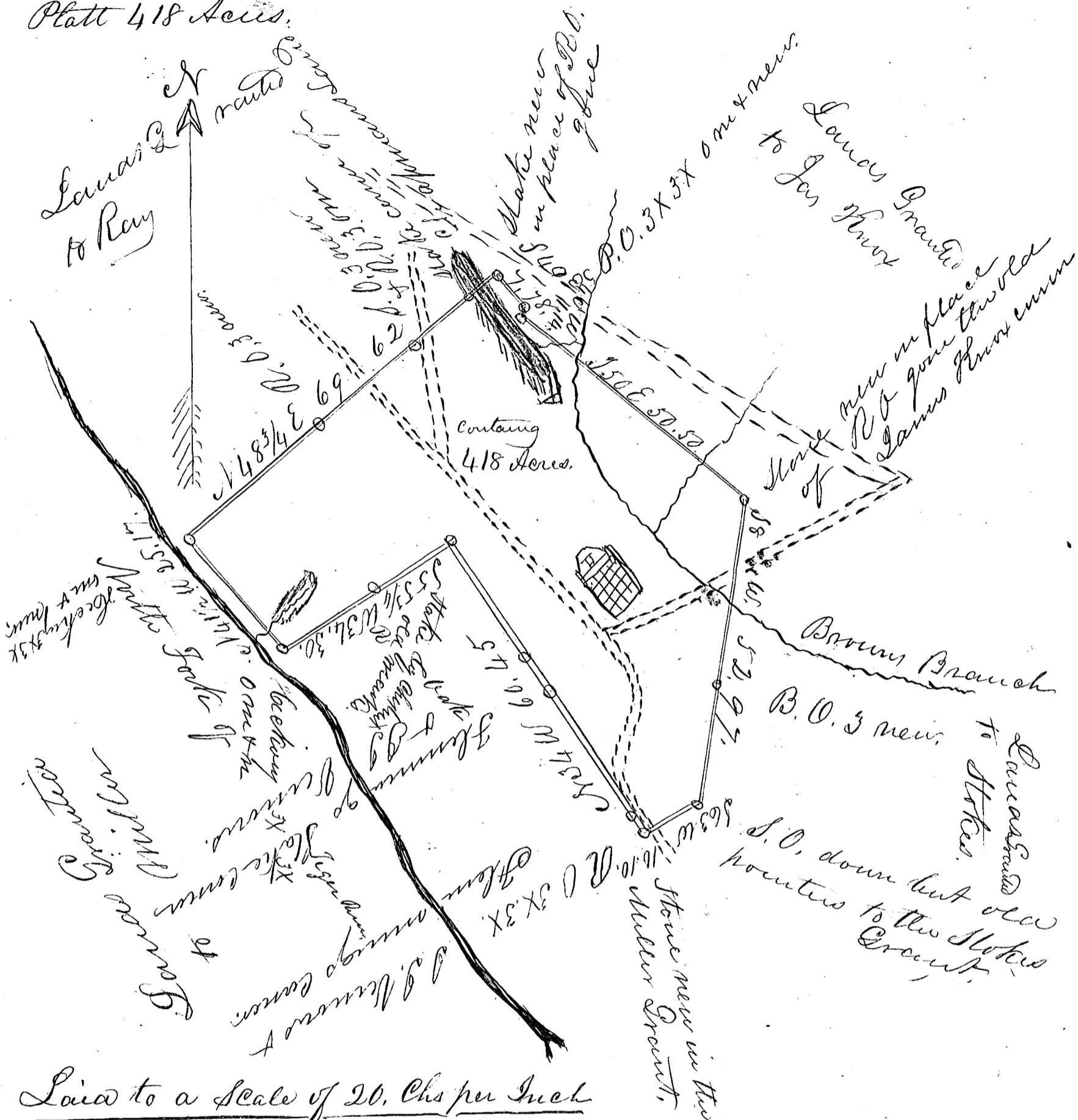


J. G. Lanarum  
Platt 418 Acres.

1835



Laid to a Scale of 20. Chs per Inch

South Carolina

Pursuant to a warrant from J. B. Tolleson  
Commissioner of Location in the district of Sparlan-  
burgh dated January 18. 1833, I have admeasured  
& laid out unto the said John G. Lanarum a  
tract of land containing 418. acres, situated in  
the said district on the waters of North Tyger river  
bounded on the North by Lanarum, Granted to Ray  
& on the N.E & East by Lanarum, Jones & Stokes, & on  
the South & S.W, by Lanarum granted to Mills the  
the above plat represents a tract of land original-  
ly granted to John Brown May 4<sup>th</sup> 1769. & the obje-  
-ct of this survey is to obtain a new grant,  
Surveyed the 10 day of Janry 1833

Marcus Cook  
Thomas Davis & Co.  
W. C. Camp D. S.  
Received 12 Janry 1835