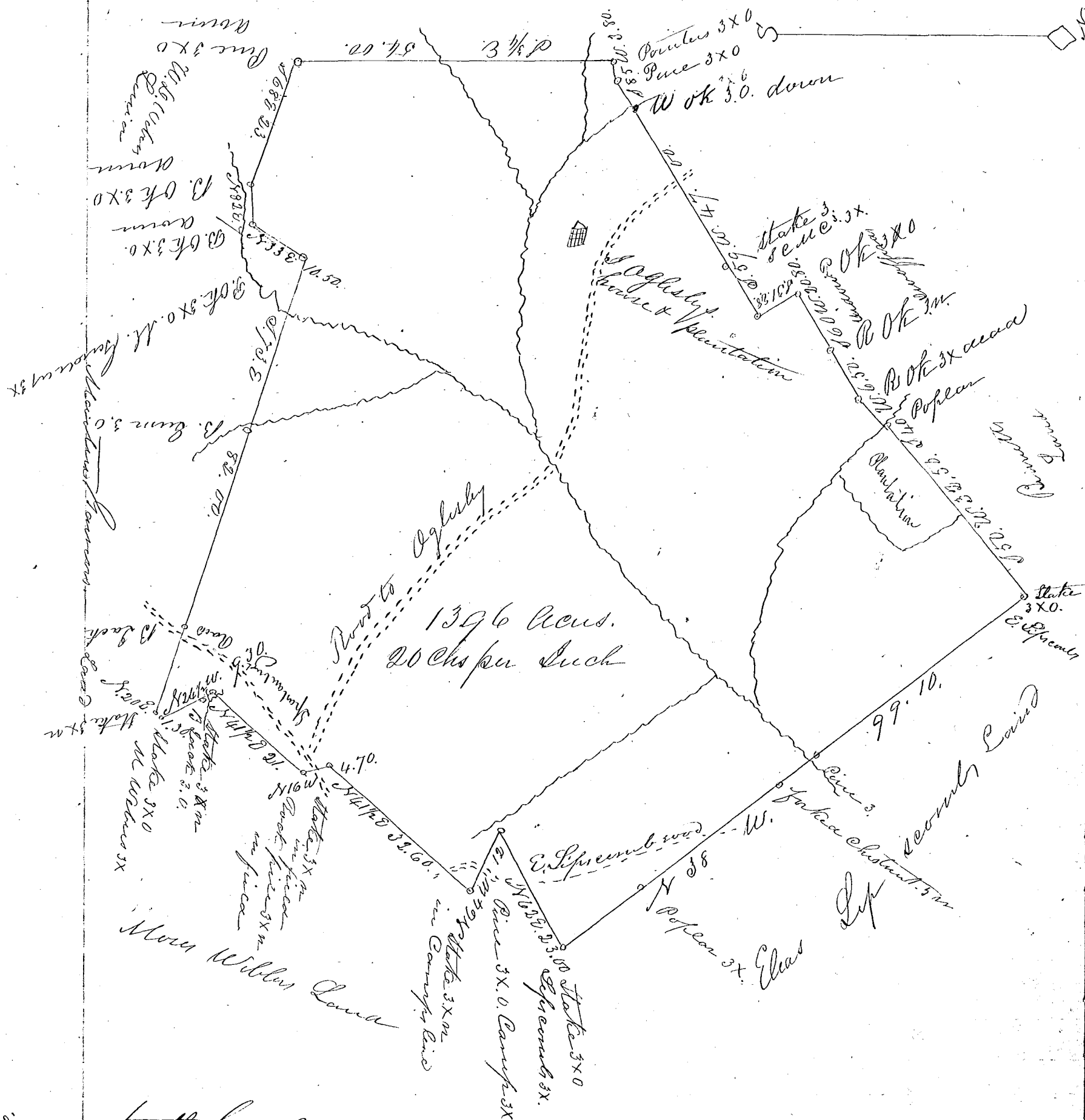


John Oglesby

J. C. M. Lewis Land



South Carolina

Pursuant to a warrant from J. D. Tolleson Esq. Commissioner of Location in the district of Spauldenburgh dated the 11th day of May 1856. I have & laid out unto John Oglesby a tract of land containing one thousand three hundred & sixty six acs. situated in the said district on the south fork of Hickory Creek waters of Broad River bounded on the N. E. by land belonging to E. Lipscomb on the N. W. by Burnett & Swafford's land on the S. W. West by land belonging to the S. C. M. C. & on the S. E. by W. D. Weber & M. Ganes & M. Weber land & hath such form & marks as the above plat represents. NB. the above being old granted land this done for the purpose of obtaining a new grant 14th April 1856 P. Durr Camp D. S.

Done the 15th April 1856.