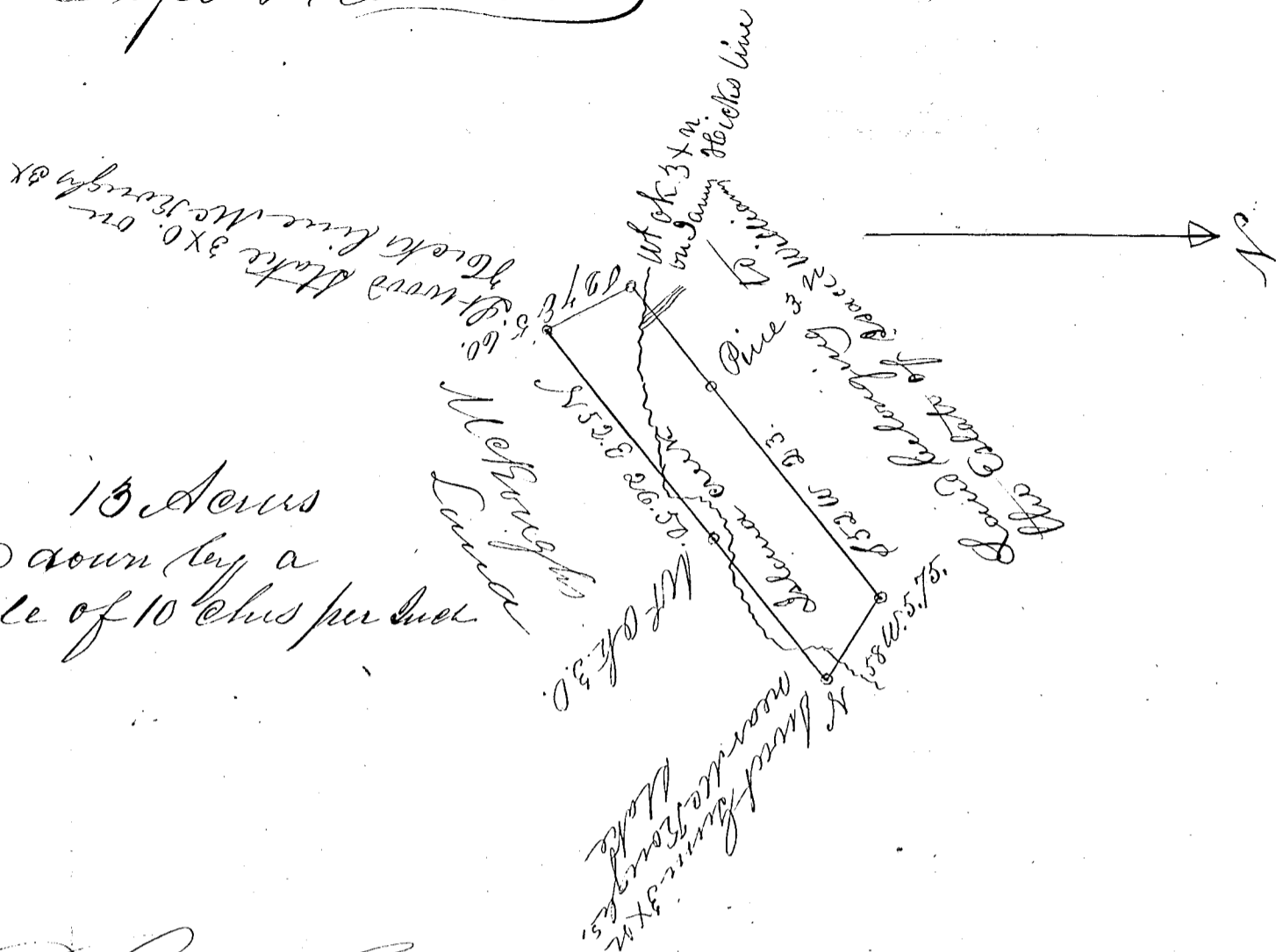


Cape Hammett



13 Acres
Laid down by a
scale of 10 chs per inch

South Carolina

Pursuant to a warrant from
J. B. Tolleson Esq. Commissioner of Location in
the district of Spauldenburgh dated the 4th
day of August 1836, I have admeasured and
laid out unto Cape Hammett a tract of
land containing thutteen acres situated in
the said district on Island Creek waters
of Pacolet river bounded by a line running
N. E. by land surveyed for John McBrugh
N. W. & S. W. by lands belonging to the estate of
Edward Williams & S. E. by lands belonging to
John Hick's and hath such form and marks
as the above plat represents

Surveyed the 6th day of August 1836

P. Quinn (Carpenter)
Supt Surveyor

Recorded the 8 August 1836