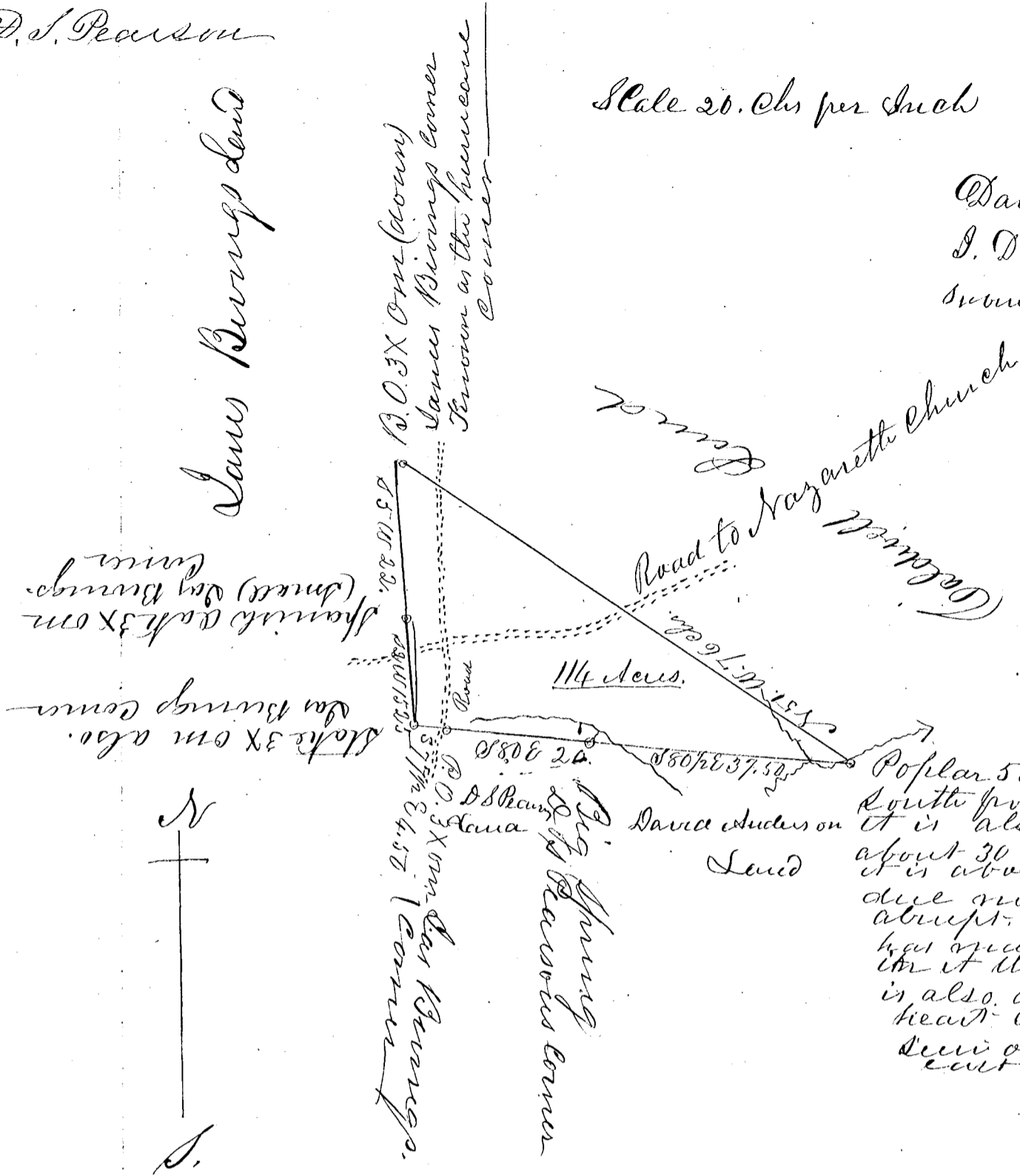


D. S. Pearson

Scale 20. Chs per Inch

David Bayly &
J. D. McMurray
Iron Chain bars.



Poplar 50. Links due South from the branch it is also broken off about 30 feet high also it is about 15 links due north of a small abrupt little hill which has made a small gully in it the poplar stands is also decayed at the head which may be seen on the south east side

South Carolina
 Sparta District Pursuant to a warrant from
 J. B. Tolleson Commissioner of Location
 in the district of Sparta dated the 18th
 day of August 1856. I have admeasured and laid out
 unto D. S. Pearson a tract of land containing one
 hundred and fourteen acres, situated in said State
 and district on branches of Middle Tyger River
 bounded by lines running S.W. James Brings lines
 and by lines running S. E. D. S. Pearson & David
 Anderson lines & by lines N. W. with the Caldwell
 Grant or Grants line or lines to the beginning
 corner & that such form & marks as the above
 plat represents surveyed the 21st day August 1856
 W. M. Grisham
 Recorder the 21st day of August 1856. Deputy Surveyor