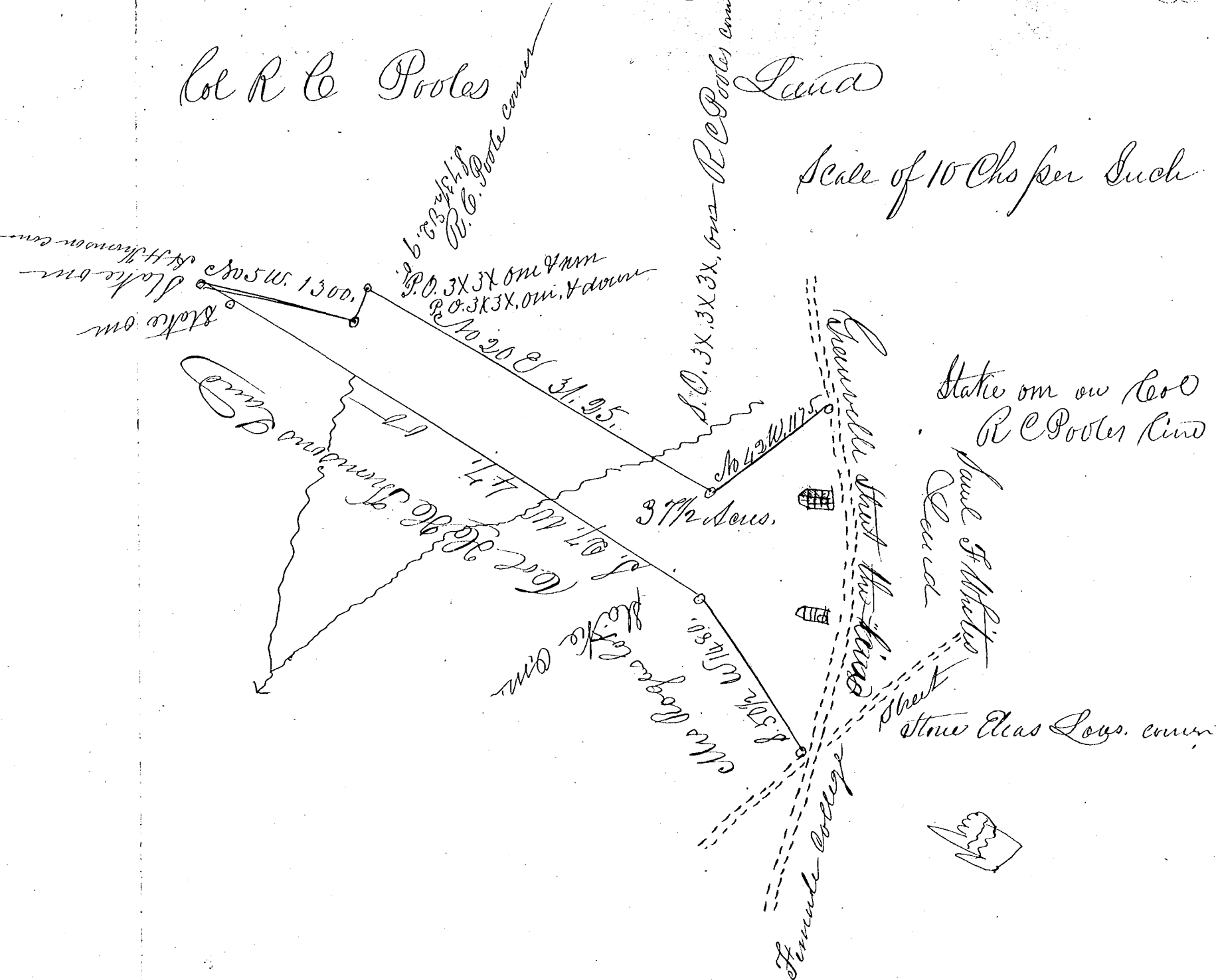


William Walker Ass^t Plat

Col R C Pooles Land

Scale of 10 Chs per Inch



South Carolina
 Spartanburgh Dist Pursuant to a warrant from
 J. B. Tolleson Commissioner of Location
 for said State & district dated the 18th June 1837,
 I have resurveyed a certain piece or lot of land for
 Wm. Walker, Ass^t, lying partly within the corporation
 of Spartanburgh Village on the south side of the
 Greenville road & on branches of Furfirst Creek
 the object of this survey is to get a grant for
 the land as it is thought it has never been granted
 it having such shape & marks as you see set forth
 in the above plat, this June 19th, 1837.
 Surveyd. by Wm C. Camp, D. S.
 Recorded the 19. June 1837