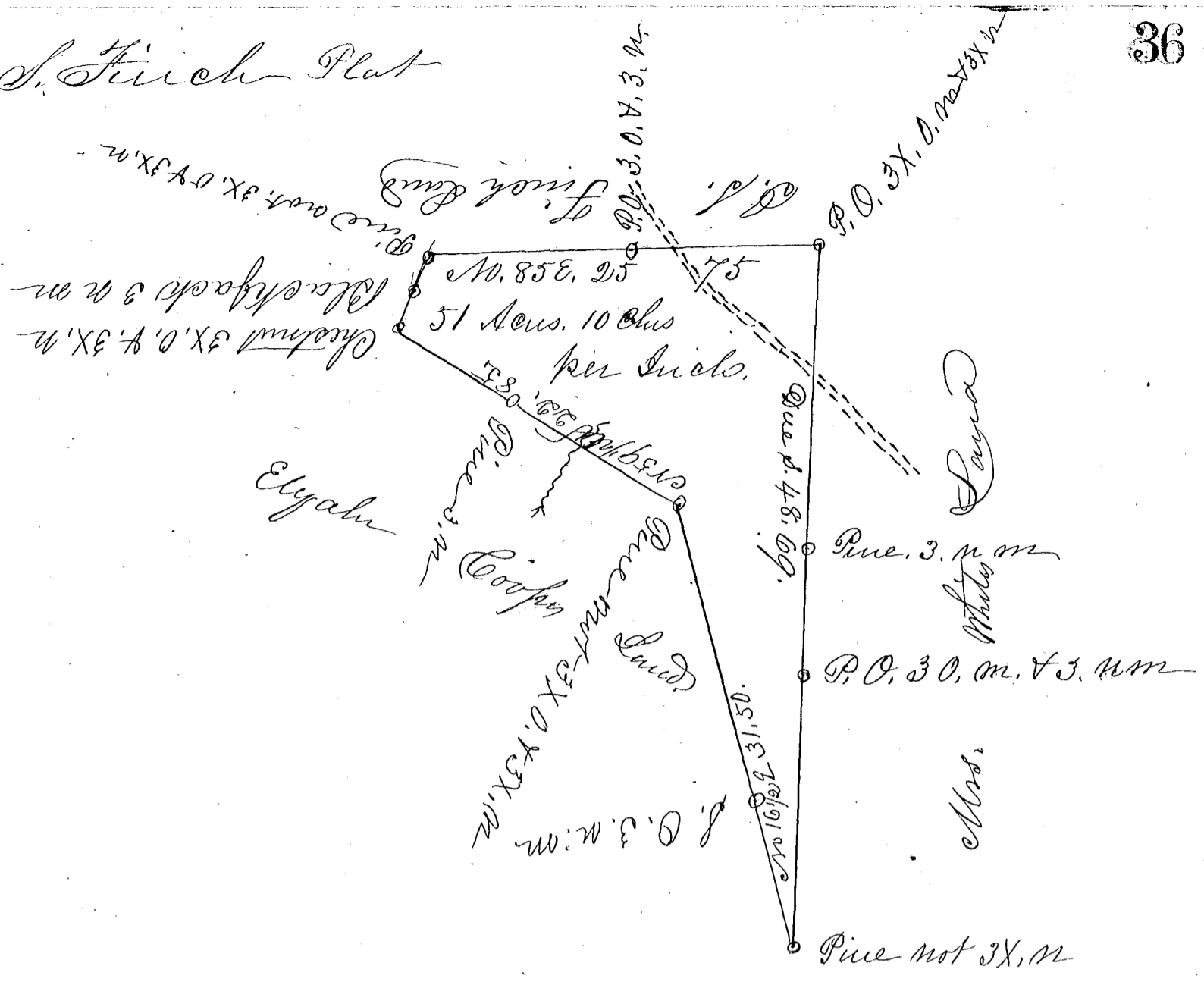


John S. Finch Plat



South Carolina Pursuant to a warrant
 Spartanburgh Dist from C. P. Tollison Comptroller
 of Location in the District
 of Spartanburgh dated the 4th day of May 1837.
 I have admeasured & laid out unto John S. Finch
 a tract of land containing Fifty one acres.
 Situated in the said district between Meadow
 & Greens Creek walus of Ducklet River bounded
 on the east by Mrs Whites land S. W. by E. Coopers
 land N. E. by J. S. Finchs land and South
 such form and marks as the above plat
 represents
 Surveyed the 6. day of May 1837.
 James A. Finch
 Deputy Surveyor
 Begonea the 7. Sept 1837