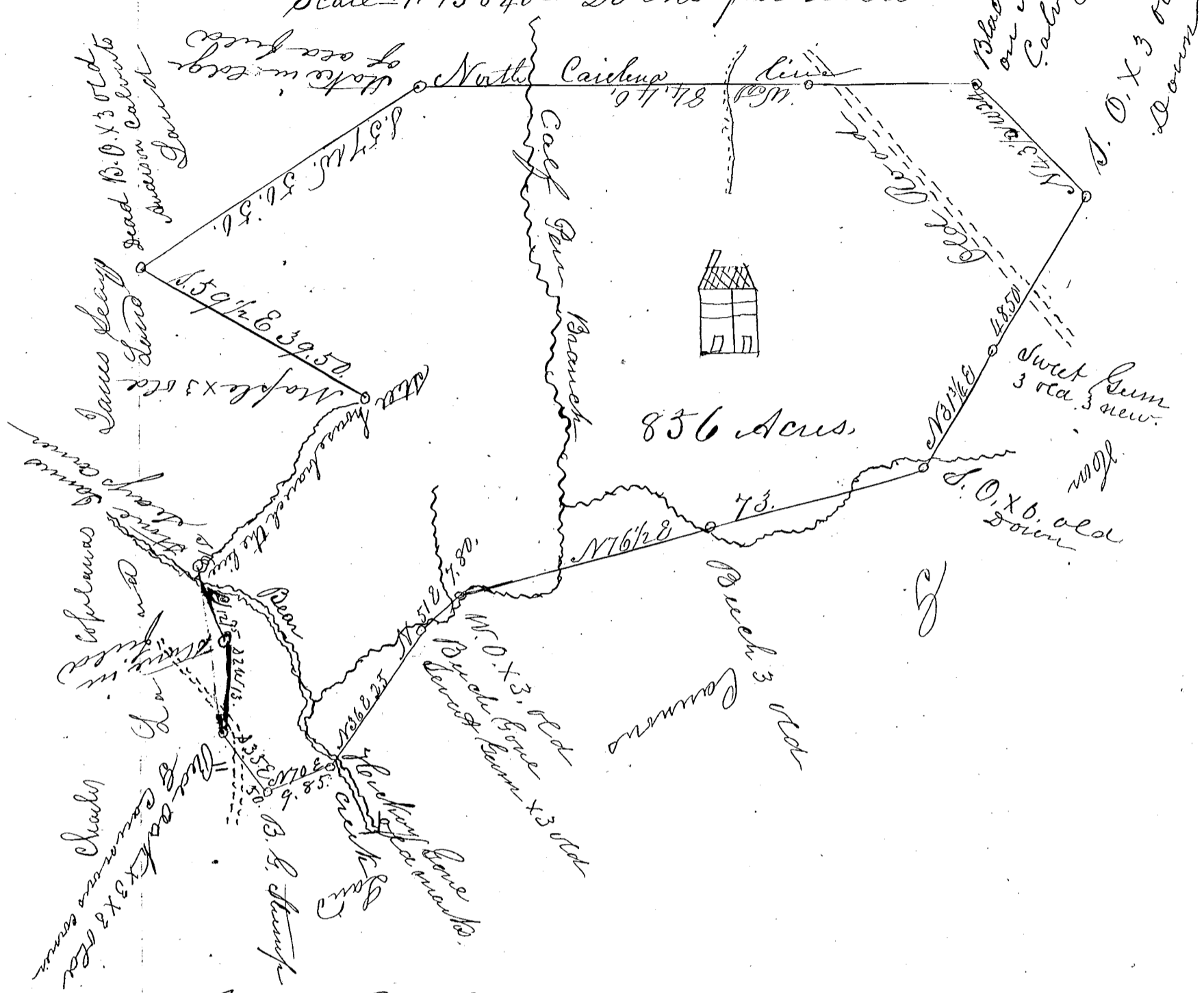


# Charles Copeland's Plat

Scale = 1/15840 = 20 chs per inch



## South Carolina

Pursuant to warrant from J B Tolles  
 = on Commission of location in the District of Spartan  
 = burgh dated the 7<sup>th</sup> of January 1859 I have admeas.  
 = ured & laid unto Charles Copeland a Tract of land  
 containing Eight hundred & fifty six acres situated  
 in Spartanburgh District on both sides of Bear  
 Creek & Calf Run Branch waters of North Carolina  
 River bounded on the north by the North Carolina  
 State line on the N. E. by Calvin White's land on  
 the East & South by Hon. G. Cannon's Land and on the  
 West by C Copeland & Jas Sayland that such shapes  
 form & marks as the above plat represents the object  
 of this survey is to unite several small tracts of vacant  
 lands to a tract of land which heretofore been  
 granted & obtain a new grant for the same bearing date 16 January 1859  
 Recd the 7. July 1859  
 John Buckston Davis  
 C. S.